



DOE/EIS-0503



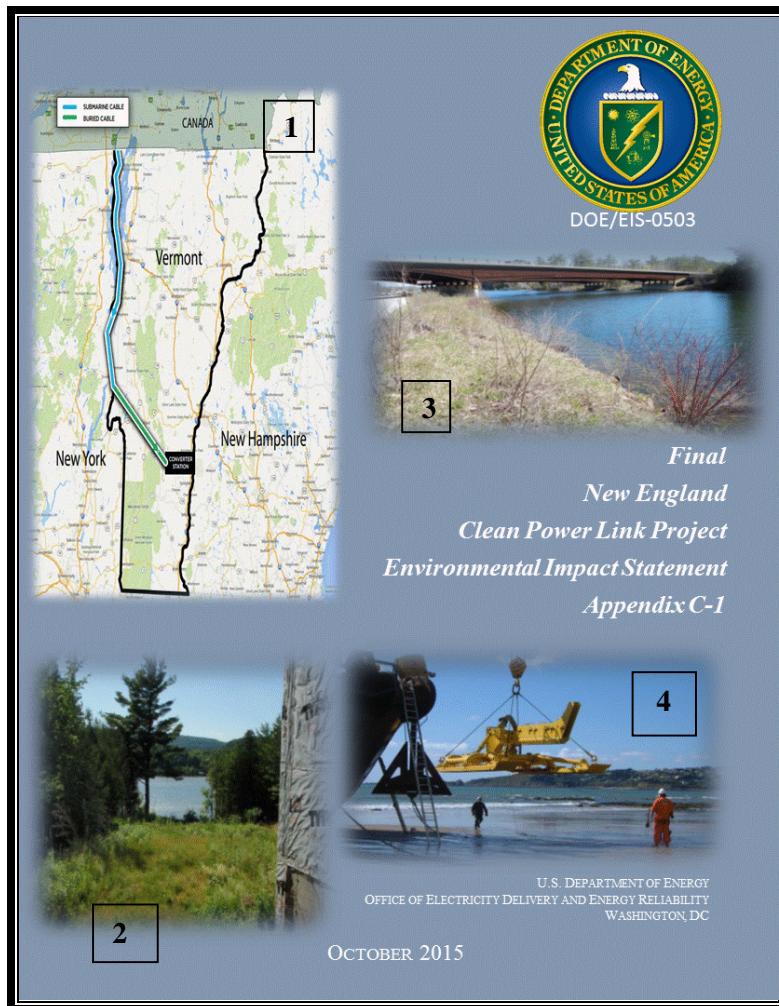
*Final  
New England  
Clean Power Link Project  
Environmental Impact Statement  
Appendix C-1*



U.S. DEPARTMENT OF ENERGY  
OFFICE OF ELECTRICITY DELIVERY AND ENERGY RELIABILITY  
WASHINGTON, DC

OCTOBER 2015





#### Cover Photo Credits

##### 1. TDI-NE

(<http://wamc/files/styles/default/public/201410/new-england-clean-power-link-map-ctsy-tdi-new-england.jpg> alt="")>)

##### 2. NECPL exit from Lake Champlain (Benson, Vermont) courtesy of TDI-NE

##### 3. Lake Bomoseen, Fair Haven, Vermont courtesy of TDI-NE

##### 4. TDI-NE 2014a

**FINAL**

**NEW ENGLAND CLEAN POWER LINK PROJECT  
ENVIRONMENTAL IMPACT STATEMENT**

**DOE/EIS-0503**

**VOLUME II: APPENDICES**

---

---

**U.S. DEPARTMENT OF ENERGY  
OFFICE OF ELECTRICITY DELIVERY  
AND ENERGY RELIABILITY**



**COOPERATING AGENCIES**

**U.S. ENVIRONMENTAL PROTECTION AGENCY  
U.S. ARMY CORPS OF ENGINEERS  
U.S. COAST GUARD**

**OCTOBER 2015**

This Page Intentionally Left Blank



## Table of Contents

Appendix A	Appendix A	Scoping Summary Report ..... A-1
Appendix B	Appendix B	EIS Distribution List ..... B-1
Appendix C	Appendix C	NECPL Project Transmission System Detailed Maps ..... C-1
Appendix D	Appendix D	Alternatives Considered but Eliminated From Further Analysis ..... D-1
Appendix E	Appendix E	CWA Section 404 and Section 10 Permit Application ..... E-1
Appendix F	Appendix F	Vermont 248 Application Cover Letter ..... F-1
Appendix G	Appendix G	TDI-NE General Mitigation Strategies ..... G-1
Appendix H	Appendix H	ESA Section 7 Documentation ..... H-1
Appendix I	Appendix I	NHPA Section 106 Documentation ..... I-1
Appendix J	Appendix J	Environmental Justice Analysis Background ..... J-1
Appendix K	Appendix K	Air Quality Analysis Background ..... K-1
Appendix L	Appendix L	Contractor Disclosure Statement ..... L-1
Appendix M	Appendix M	Comment Response Document ..... M-1

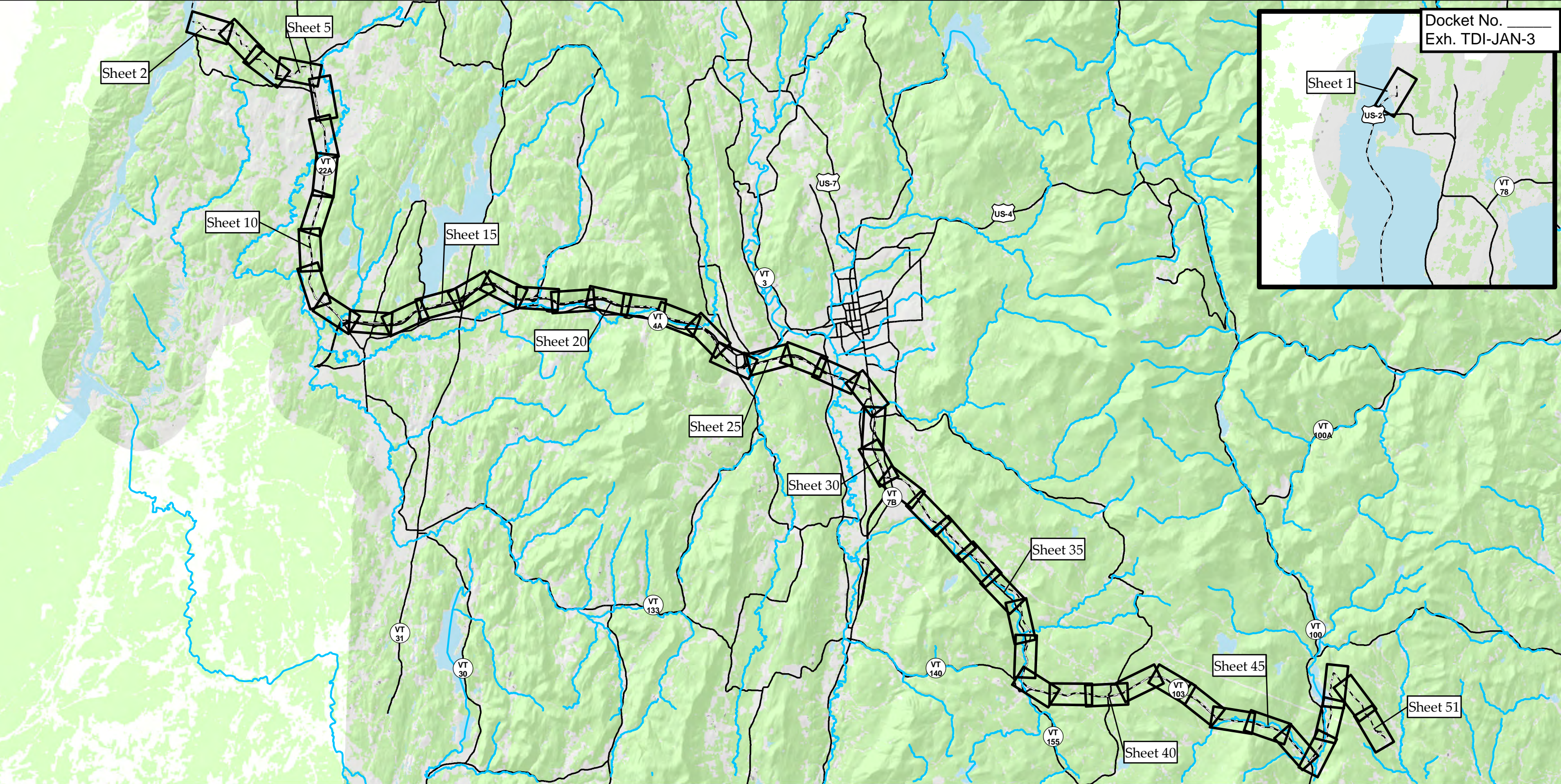
This Page Intentionally Left Blank



## **APPENDIX C NECPL PROJECT TRANSMISSION SYSTEM DETAILED MAPS**

This Page Intentionally Left Blank

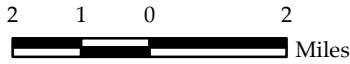




Docket No. \_\_\_\_\_  
Exh. TDI-JAN-3

Sources: Land Use Land Cover & Hillshade provided by VCGI (2002); Statewide datasets provided by VCGI: Roads by VTrans (2013); NRCS Soils by NRCS (2008); Streams & Waterbodies by VHD (2010), County and Town Boundaries by VCGI (2012), Provided by TRC: Conceptual Project Alignment (2014)

- NECPL Proposed Alignment (TRC)
- Roads
- Streams (VHD)
- Town Boundary (VCGI)
- Sheet Outline
- County Boundary (VCGI)
- Waterbody (VHD)



**TDI - NECPL Project  
Overland Component  
Grand Isle, Rutland, &  
Windsor Counties, VT  
Natural Resource Map Series Index**

December 2, 2014



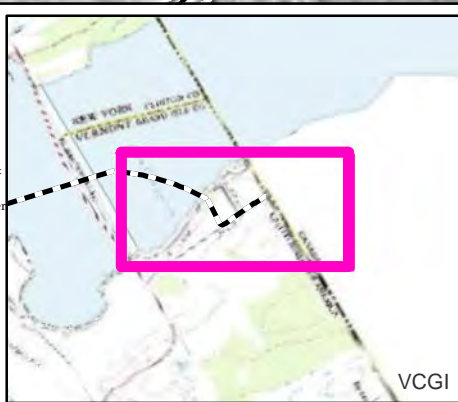




Sources: Background provided by VCGI (2007-2013); Provided by VCGI: Roads by VTrans (2012); NRCS Soils by NRCS (2008); Streams & Waterbodies by VHD (2010), VSWI Wetlands by ANR (2013), Deer Wintering Area by ANR (2013), County and Town Boundaries by VCGI (2012); Bear Crossing & Feeding Data by VT Fish & Wildlife (2001) Provided by TRC: Contours (2014), Conceptual Project Alignment (2014), VTrans ROW (2014), Parcel Boundaries (2009-2013) 100-year flood & Floodway compiled by TRC from FEMA (2014), Wetland & Stream Delineations by TRC & VHB (2014); Bat tree, Natural Community and RTE data assessments completed by Arrowwood Environmental (2014); River Corridors provided by VTDEC (2014).

Type = C  
State Rank = S4  
State Listed = N/A  
Federal Rank =  
Type = A  
State Rank = S2  
State Listed =  
Federal Rank =

**vhb**  
**TRC**  
Results you can rely on



NECPL Proposed Overland Alignment (TRC)	Proposed Class II Wetland (TRC/VHB)	NHI Element Occurrence (VTFW)	Floodway (FEMA)
Horizontal Directional Drilling (HDD)	Proposed Class III Wetland (TRC/VHB)	RTEs	100 year floodplain (FEMA)
Jack and Bore	Proposed 50' Class II Wetland Buffer (VHB)	Significant Natural Community	River Corridor (VTDEC)
Terrestrial Cable (Trenching)	Approximate Stream (TRC/VHB)	Bear Crossing (VTFW)	Waterbody (VHD)
Project Parcel	Delineated Stream (TRC/VHB)	Bear Feeding (VTFW)	Town Boundary (VCGI)
Parcel Boundary	RTE Plants (AE)	Deer Wintering Area (ANR)	Country Boundary (VCGI)
Study Area	Natural Resource Buffer (VHB)	VSWI Wetland (ANR)	Road (VTrans)
Approximate Study Area	Potential Bat Tree (AE)	Named VHD Stream (VCGI)	50 Ft. Contour
Sheet Outline	Natural Community (AE)	Unnamed VHD Stream (VCGI)	10 Ft. Contour
	Uncommon (S3) Plants (AE)		
	Deer Wintering Area (AE)		

TDI - NECPL Project  
Overland Component  
Grand Isle, Rutland, &  
Windsor Counties, VT  
Natural Resource Map Series

Sheet Number 1 of 51  
December 2, 2014

4002000400

Feet

4002000400

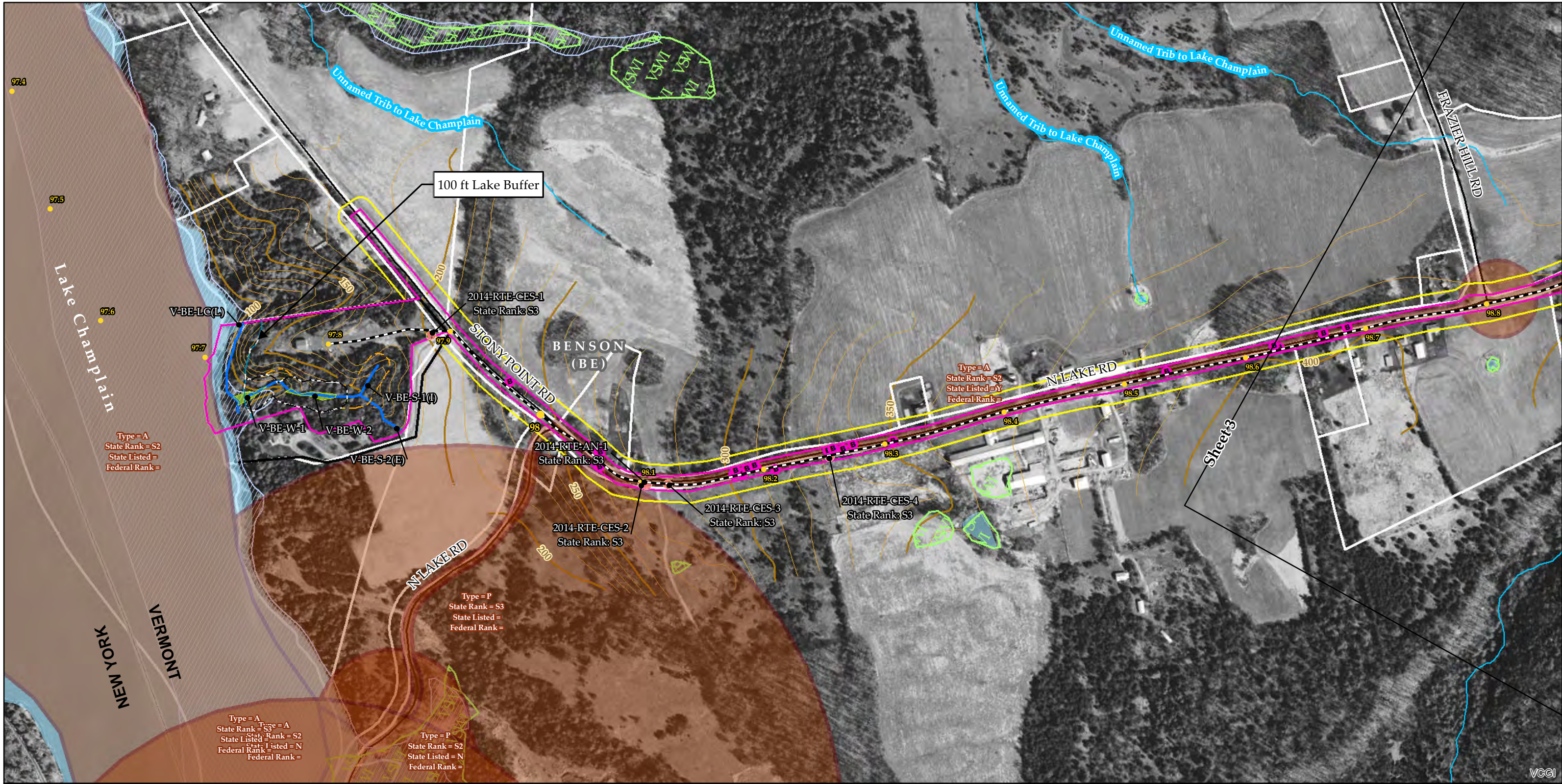
Feet

4002000400

Feet

\\VTNFDATA\projects\57666.00 NE Clean Power Link\GIS\Project\NR\_Maps\NRMmaps\_11x17\_400scale.mxd exported by:acoplin On 12/2/2014





Sources: Background provided by VCGI (2007-2013); Provided by VCGI: Roads by VTrans (2012); NRCS Soils by NRCS (2008); Streams & Waterbodies by VHD (2010), VSWI Wetlands by ANR (2013), Deer Wintering Area by ANR (2013), County and Town Boundaries by VCGI (2012); Bear Crossing & Feeding Data by VT Fish & Wildlife (2001) Provided by TRC: Contours (2014), Conceptual Project Alignment (2014), VTrans ROW (2014), Parcel Boundaries (2009-2013) 100-year flood & Floodway compiled by TRC from FEMA (2014), Wetland & Stream Delineations by TRC & VHB (2014); Bat tree, Natural Community and RTE data assessments completed by Arrowwood Environmental (2014); River Corridors provided by VTDEC (2014).

NECPL Proposed Overland Alignment (TRC)

- Horizontal Directional Drilling (HDD)
- Jack and Bore
- Terrestrial Cable (Trenching)
- Project Parcel
- Parcel Boundary
- Study Area
- Approximate Study Area
- Sheet Outline

Proposed Class II Wetland (TRC/VHB)

- Proposed Class III Wetland (TRC/VHB)
- Proposed 50' Class II Wetland Buffer (VHB)
- Approximate Stream (TRC/VHB)
- Delineated Stream (TRC/VHB)
- RTE Plants (AE)
- Natural Resource Buffer (VHB)
- Potential Bat Tree (AE)
- Natural Community (AE)
- Uncommon (S3) Plants (AE)
- Deer Wintering Area (AE)

NHI Element Occurrence (VTFW)

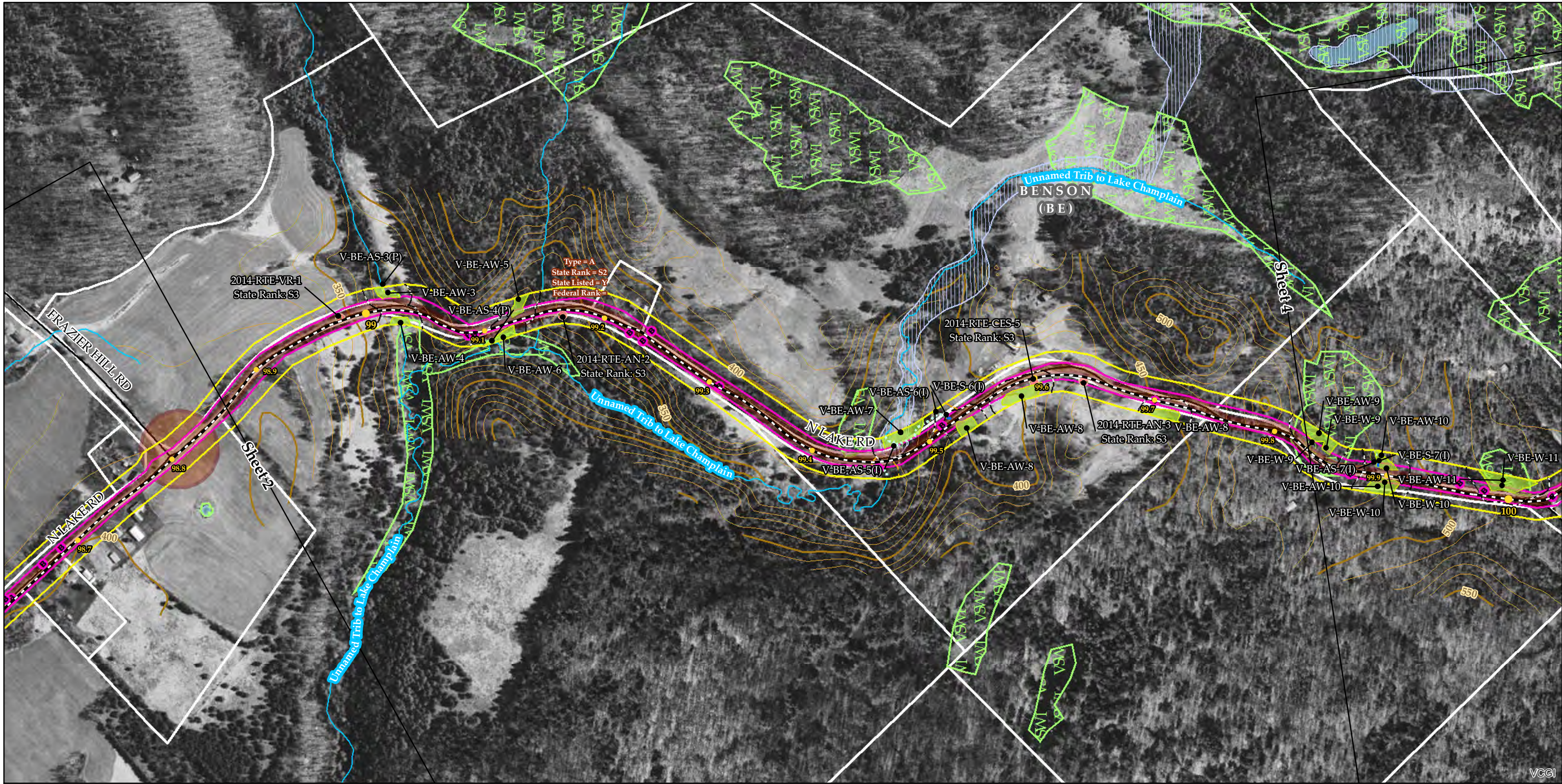
- RTEs
- Significant Natural Community
- Bear Crossing (VTFW)
- Bear Feeding (VTFW)
- Deer Wintering Area (ANR)
- VSWI Wetland (ANR)
- Named VHD Stream (VCGI)
- Unnamed VHD Stream (VCGI)

Floodway (FEMA)

- 100 year floodplain (FEMA)
- River Corridor (VTDEC)
- Waterbody (VHD)
- Town Boundary (VCGI)
- Country Boundary (VCGI)
- Road (VTrans)
- 50 Ft. Contour
- 10 Ft. Contour

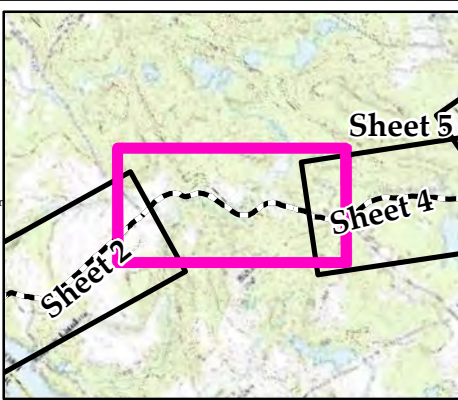
**TDI - NECPL Project Overland Component**  
**Grand Isle, Rutland, & Windsor Counties, VT**  
**Natural Resource Map Series**  
Sheet Number 2 of 51  
December 2, 2014





Sources: Background provided by VCGI (2007-2013); Provided by VCGI: Roads by VTrans (2012); NRCS Soils by NRCS (2008); Streams & Waterbodies by VHD (2010), VSWI Wetlands by ANR (2013), Deer Wintering Area by ANR (2013), County and Town Boundaries by VCGI (2012); Bear Crossing & Feeding Data by VT Fish & Wildlife (2001) Provided by TRC: Contours (2014), Conceptual Project Alignment (2014), VTrans ROW (2014), Parcel Boundaries (2009-2013) 100-year flood & Floodway compiled by TRC from FEMA (2014), Wetland & Stream Delineations by TRC & VHB (2014); Bat tree, Natural Community and RTE data assessments completed by Arrowwood Environmental (2014); River Corridors provided by VTDEC (2014).

**vhb**  
**TRC**  
Results you can rely on



NECPL Proposed Overland Alignment (TRC)

- Horizontal Directional Drilling (HDD)
- Jack and Bore
- Terrestrial Cable (Trenching)
- Project Parcel
- Parcel Boundary
- Study Area
- Approximate Study Area
- Sheet Outline

Proposed Class II Wetland (TRC/VHB)

- Proposed Class III Wetland (TRC/VHB)
- Proposed 50' Class II Wetland Buffer (VHB)
- Approximate Stream (TRC/VHB)
- Delineated Stream (TRC/VHB)
- RTE Plants (AE)
- Natural Resource Buffer (VHB)
- Potential Bat Tree (AE)
- Natural Community (AE)
- Uncommon (S3) Plants (AE)
- Deer Wintering Area (AE)

NHI Element Occurrence (VTFW)

- RTEs
- Significant Natural Community
- Bear Crossing (VTFW)
- Bear Feeding (VTFW)
- Deer Wintering Area (ANR)
- VSWI Wetland (ANR)
- Named VHD Stream (VCGI)
- Unnamed VHD Stream (VCGI)

Floodway (FEMA)

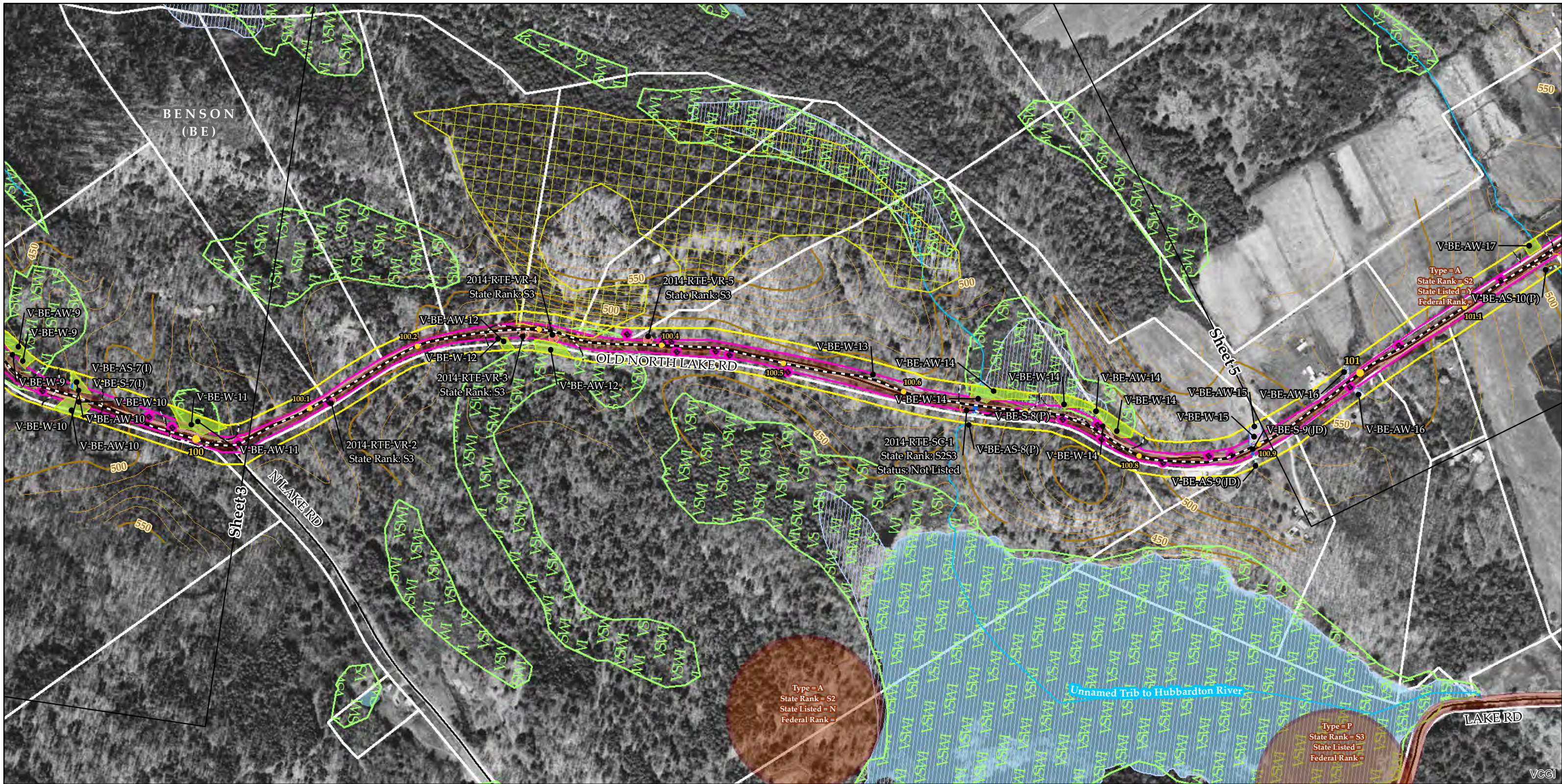
- 100 year floodplain (FEMA)
- River Corridor (VTDEC)
- Waterbody (VHD)
- Town Boundary (VCGI)
- Country Boundary (VCGI)
- Road (VTrans)
- 50 Ft. Contour
- 10 Ft. Contour

**TDI - NECPL Project  
Overland Component  
Grand Isle, Rutland, &  
Windsor Counties, VT  
Natural Resource Map Series**

Sheet Number 3 of 51  
December 2, 2014

400 200 0 400  
Feet





Sources: Background provided by VCGI (2007-2013); Provided by VCGI: Roads by VTrans (2012); NRCS Soils by NRCS (2008); Streams & Waterbodies by VHD (2010); VSWI Wetlands by ANR (2013); Deer Wintering Area by ANR (2013); County and Town Boundaries by VCGI (2012); Bear Crossing & Feeding Data by VT Fish & Wildlife (2001) Provided by TRC: Contours (2014), Conceptual Project Alignment (2014), VTrans ROW (2014), Parcel Boundaries (2009-2013) 100-year flood & Floodway compiled by TRC from FEMA (2014), Wetland & Stream Delineations by TRC & VHB (2014); Bat tree, Natural Community and RTE data assessments completed by Arrowwood Environmental (2014); River Corridors provided by VTDEC (2014).

NECPL Proposed Overland Alignment (TRC)

- Horizontal Directional Drilling (HDD)
- Jack and Bore
- Terrestrial Cable (Trenching)
- Project Parcel
- Parcel Boundary
- Study Area
- Approximate Study Area
- Sheet Outline

Proposed Class II Wetland (TRC/VHB)

- Proposed Class III Wetland (TRC/VHB)
- Proposed 50' Class II Wetland Buffer (VHB)
- Approximate Stream (TRC/VHB)
- Delineated Stream (TRC/VHB)
- RTE Plants (AE)
- Natural Resource Buffer (VHB)
- Potential Bat Tree (AE)
- Natural Community (AE)
- Uncommon (S3) Plants (AE)
- Deer Wintering Area (AE)

NHI Element Occurrence (VTFW)

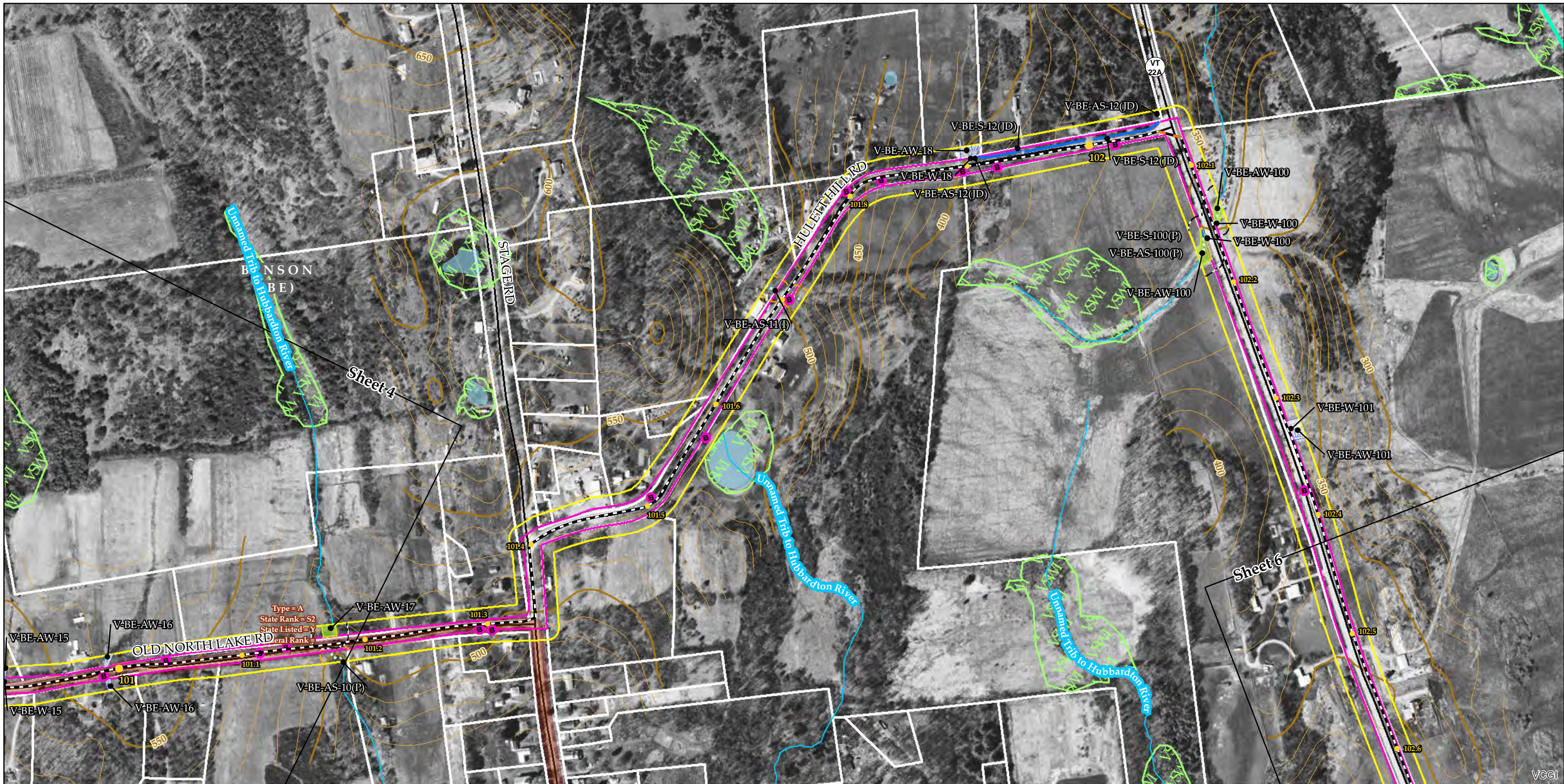
- RTEs
- Significant Natural Community
- Bear Crossing (VTFW)
- Bear Feeding (VTFW)
- Deer Wintering Area (ANR)
- VSWI Wetland (ANR)
- Named VHD Stream (VCGI)
- Unnamed VHD Stream (VCGI)

Floodway (FEMA)

- 100 year floodplain (FEMA)
- River Corridor (VTDEC)
- Waterbody (VHD)
- Town Boundary (VCGI)
- Country Boundary (VCGI)
- Road (VTrans)
- 50 Ft. Contour
- 10 Ft. Contour

**TDI - NECPL Project Overland Component**  
**Grand Isle, Rutland, & Windsor Counties, VT**  
**Natural Resource Map Series**  
Sheet Number 4 of 51  
December 2, 2014





Sources: Background provided by VCGI (2007-2013); Provided by VCGI: Roads by VTrans (2012); NRCS Soils by NRCS (2008); Streams & Waterbodies by VHD (2010), VSWI Wetlands by ANR (2013), Deer Wintering Area by ANR (2013), County and Town Boundaries by VCGI (2012); Bear Crossing & Feeding Data by VT Fish & Wildlife (2001) Provided by TRC: Contours (2014), Conceptual Project Alignment (2014), VTrans ROW (2014), Parcel Boundaries (2009-2013) 100-year flood & Floodway compiled by TRC from FEMA (2014), Wetland & Stream Delineations by TRC & VHB (2014); Bat tree, Natural Community and RTE data assessments completed by Arrowwood Environmental (2014); River Corridors provided by VTDEC (2014).

Sheet 3  
Sheet 4  
Sheet 5  
Sheet 6

vhb  
TRC  
Results you can rely on

NECPL Proposed Overland Alignment (TRC)	Proposed Class II Wetland (TRC/VHB)	NHI Element Occurrence (VTFW)	Floodway (FEMA)
Horizontal Directional Drilling (HDD)	Proposed Class III Wetland (TRC/VHB)	RTEs	100 year floodplain (FEMA)
Jack and Bore	Proposed 50' Class II Wetland Buffer (VHB)	Significant Natural Community	River Corridor (VTDEC)
Terrestrial Cable (Trenching)	Approximate Stream (TRC/VHB)	Bear Crossing (VTFW)	Waterbody (VHD)
Project Parcel	Delineated Stream (TRC/VHB)	Bear Feeding (VTFW)	Town Boundary (VCGI)
Parcel Boundary	RTE Plants (AE)	Deer Wintering Area (ANR)	Country Boundary (VCGI)
Study Area	Natural Resource Buffer (VHB)	VSWI Wetland (ANR)	Road (VTrans)
Approximate Study Area	Potential Bat Tree (AE)	Named VHD Stream (VCGI)	50 Ft. Contour
Sheet Outline	Natural Community (AE)	Unnamed VHD Stream (VCGI)	10 Ft. Contour
	Uncommon (S3) Plants (AE)		
	Deer Wintering Area (AE)		

### TDI - NECPL Project Overland Component

### Grand Isle, Rutland, & Windsor Counties, VT

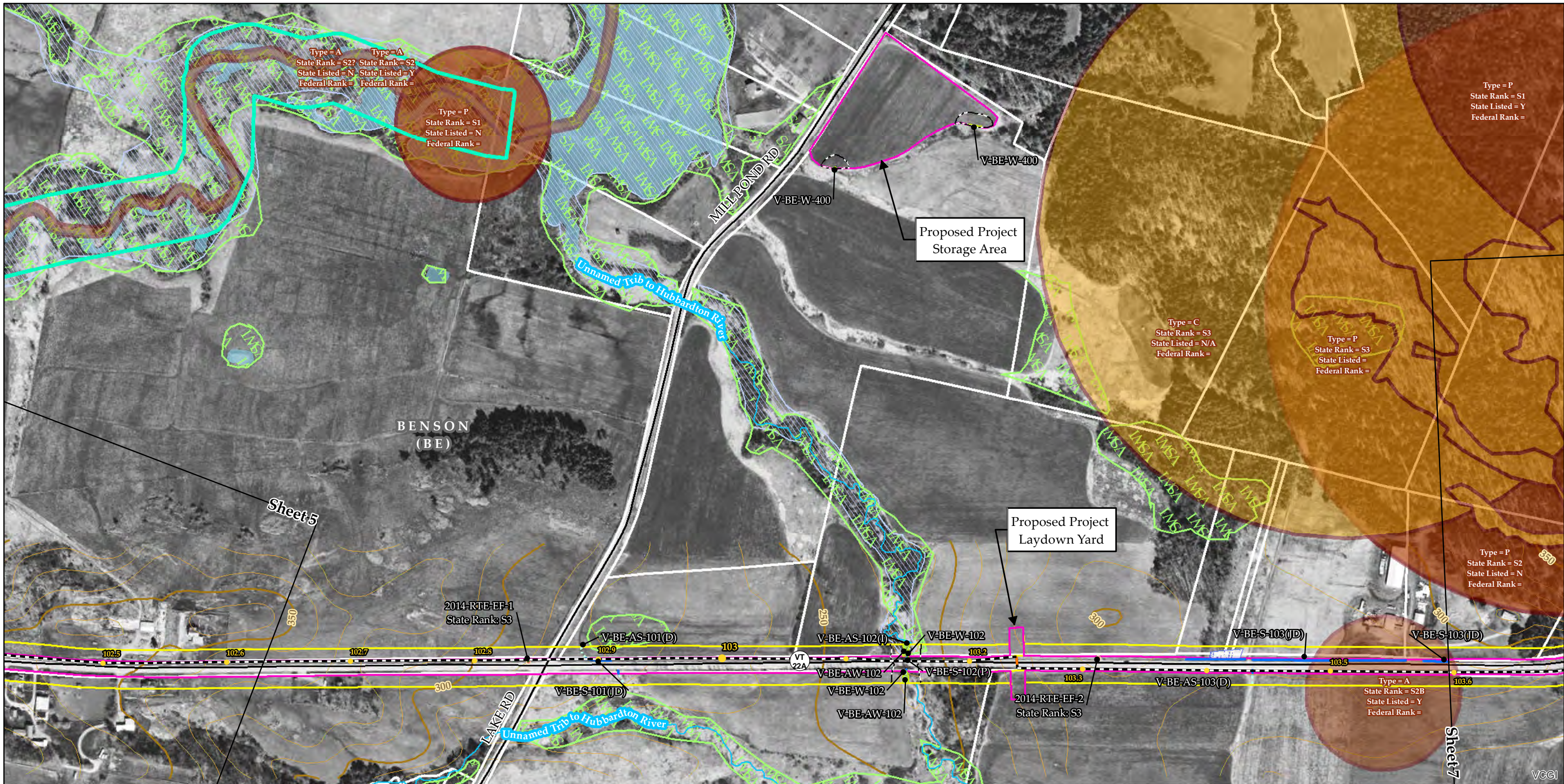
### Natural Resource Map Series

Sheet Number 5 of 51

December 2, 2014

400 200 0 400 Feet





Sources: Background provided by VCGI (2007-2013); Provided by VCGI: Roads by VTrans (2012); NRCS Soils by NRCS (2008); Streams & Waterbodies by VHD (2010), VSWI Wetlands by ANR (2013), Deer Wintering Area by ANR (2013), County and Town Boundaries by VCGI (2012); Bear Crossing & Feeding Data by VT Fish & Wildlife (2001) Provided by TRC: Contours (2014), Conceptual Project Alignment (2014), VTrans ROW (2014), Parcel Boundaries (2009-2013) 100-year flood & Floodway compiled by TRC from FEMA (2014), Wetland & Stream Delineations by TRC & VHB (2014); Bat tree, Natural Community and RTE data assessments completed by Arrowwood Environmental (2014); River Corridors provided by VTDEC (2014).

NECPL Proposed Overland Alignment (TRC)	Proposed Class II Wetland (TRC/VHB)	NHI Element Occurrence (VTFW)	Floodway (FEMA)
Horizontal Directional Drilling (HDD)	Proposed Class III Wetland (TRC/VHB)	RTEs	100 year floodplain (FEMA)
Jack and Bore	Proposed 50' Class II Wetland Buffer (VHB)	Significant Natural Community	River Corridor (VTDEC)
Terrestrial Cable (Trenching)	Approximate Stream (TRC/VHB)	Bear Crossing (VTFW)	Waterbody (VHD)
Project Parcel	Delineated Stream (TRC/VHB)	Bear Feeding (VTFW)	Town Boundary (VCGI)
Parcel Boundary	RTE Plants (AE)	Deer Wintering Area (ANR)	Country Boundary (VCGI)
Study Area	Natural Resource Buffer (VHB)	VSWI Wetland (ANR)	Road (VTrans)
Approximate Study Area	Potential Bat Tree (AE)	Named VHD Stream (VCGI)	50 Ft. Contour
Sheet Outline	Natural Community (AE)	Unnamed VHD Stream (VCGI)	10 Ft. Contour
	Uncommon (S3) Plants (AE)		
	Deer Wintering Area (AE)		

### TDI - NECPL Project Overland Component

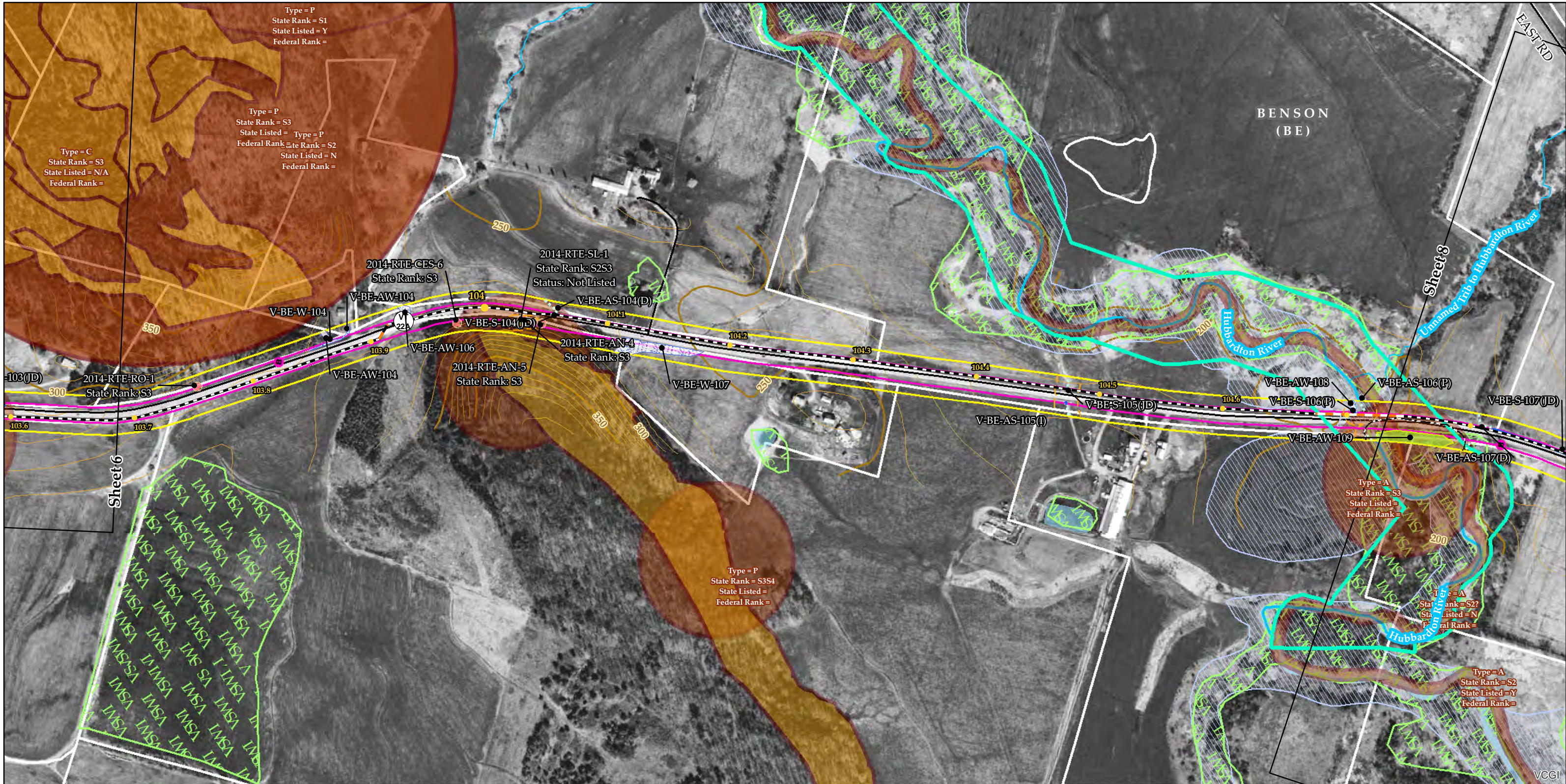
### Grand Isle, Rutland, & Windsor Counties, VT

### Natural Resource Map Series

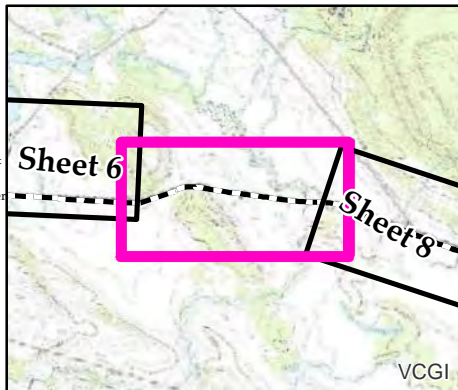
Sheet Number 6 of 51

December 2, 2014





Sources: Background provided by VCGI (2007-2013); Provided by VCGI: Roads by VTrans (2012); NRCS Soils by NRCS (2008); Streams & Waterbodies by VHD (2010); VSWI Wetlands by ANR (2013); Deer Wintering Area by ANR (2013); County and Town Boundaries by VCGI (2012); Bear Crossing & Feeding Data by VT Fish & Wildlife (2001) Provided by TRC: Contours (2014); Conceptual Project Alignment (2014); VTrans ROW (2014); Parcel Boundaries (2009-2013) 100-year flood & Floodway compiled by TRC from FEMA (2014); Wetland & Stream Delineations by TRC & VHB (2014); Bat tree, Natural Community and RTE data assessments completed by Arrowwood Environmental (2014); River Corridors provided by VTDEC (2014).



- NECPL Proposed Overland Alignment (TRC)
- Horizontal Directional Drilling (HDD)
  - Jack and Bore
  - Terrestrial Cable (Trenching)
  - Project Parcel
  - Parcel Boundary
  - Study Area
  - Approximate Study Area
  - Sheet Outline

- Proposed Class II Wetland (TRC/VHB)
- Proposed Class III Wetland (TRC/VHB)
- Proposed 50' Class II Wetland Buffer (VHB)
- Approximate Stream (TRC/VHB)
- Delineated Stream (TRC/VHB)
- RTE Plants (AE)
- Natural Resource Buffer (VHB)
- Potential Bat Tree (AE)
- Natural Community (AE)
- Uncommon (S3) Plants (AE)
- Deer Wintering Area (AE)

- NHI Element Occurrence (VTFW)
- RTEs
  - Significant Natural Community
  - Bear Crossing (VTFW)
  - Bear Feeding (VTFW)
  - Deer Wintering Area (ANR)
  - VSWI Wetland (ANR)
  - Named VHD Stream (VCGI)
  - Unnamed VHD Stream (VCGI)

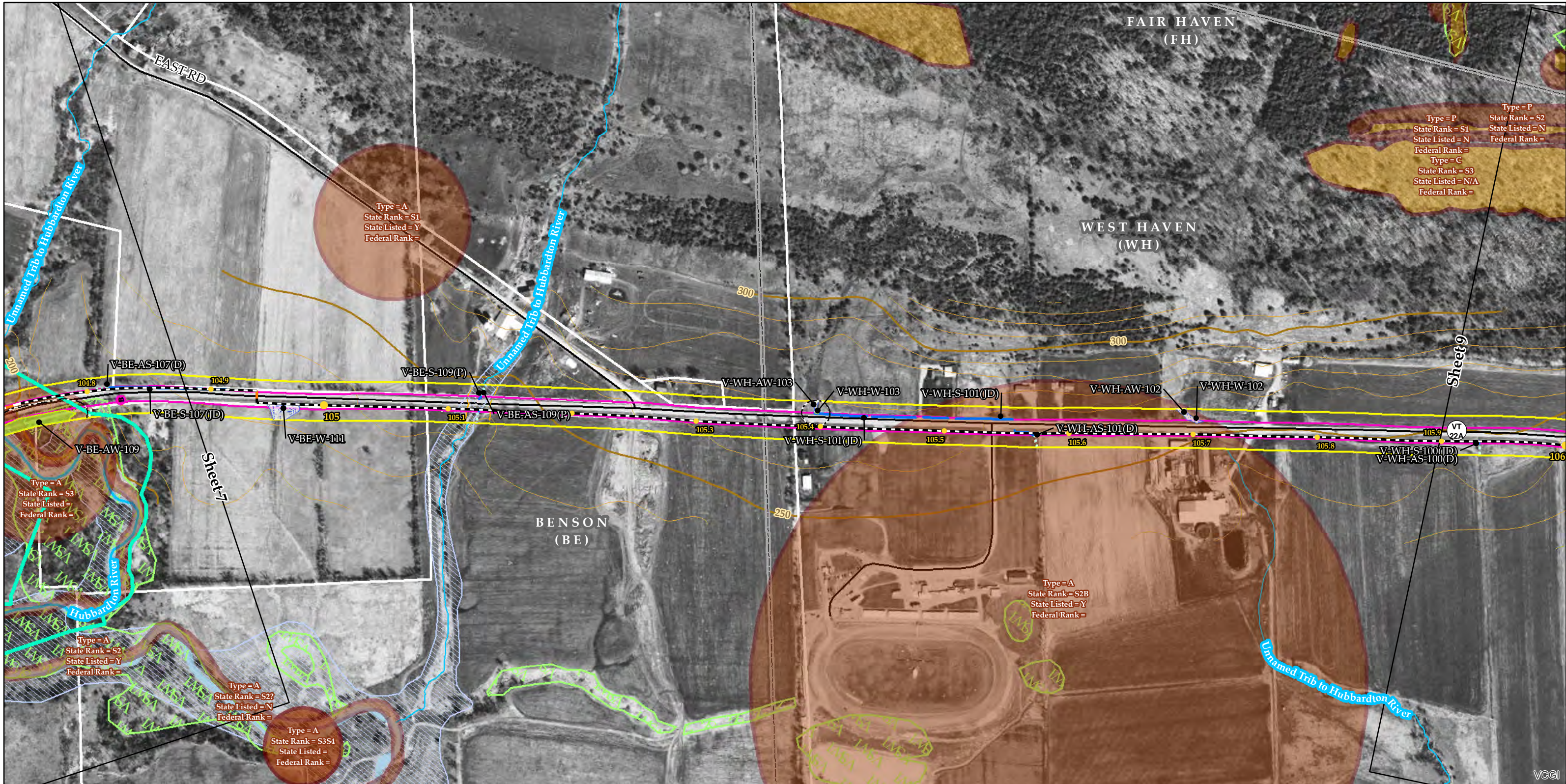
- Floodway (FEMA)
- 100 year floodplain (FEMA)
- River Corridor (VTDEC)
- Waterbody (VHD)
- Town Boundary (VCGI)
- Country Boundary (VCGI)
- Road (VTrans)
- 50 Ft. Contour
- 10 Ft. Contour

## TDI - NECPL Project Overland Component Grand Isle, Rutland, & Windsor Counties, VT Natural Resource Map Series

Sheet Number 7 of 51  
December 2, 2014

400 200 0 400  
Feet





Sources: Background provided by VCGI (2007-2013); Provided by VCGI: Roads by VTrans (2012); NRCS Soils by NRCS (2008); Streams & Waterbodies by VHD (2010), VSWI Wetlands by ANR (2013), Deer Wintering Area by ANR (2013), County and Town Boundaries by VCGI (2012); Bear Crossing & Feeding Data by VT Fish & Wildlife (2001) Provided by TRC: Contours (2014), Conceptual Project Alignment (2014), VTrans ROW (2014), Parcel Boundaries (2009-2013) 100-year flood & Floodway compiled by TRC from FEMA (2014), Wetland & Stream Delineations by TRC & VHB (2014); Bat tree, Natural Community and RTE data assessments completed by Arrowwood Environmental (2014); River Corridors provided by VTDEC (2014).

**NECPL Proposed Overland Alignment (TRC)**

- Horizontal Directional Drilling (HDD)
- Jack and Bore
- Terrestrial Cable (Trenching)
- Project Parcel
- Parcel Boundary
- Study Area
- Approximate Study Area
- Sheet Outline

**Proposed Class II Wetland (TRC/VHB)**

- Proposed Class III Wetland (TRC/VHB)
- Proposed 50' Class II Wetland Buffer (VHB)
- Approximate Stream (TRC/VHB)
- Delineated Stream (TRC/VHB)
- RTE Plants (AE)
- Natural Resource Buffer (VHB)
- Potential Bat Tree (AE)
- Natural Community (AE)
- Uncommon (S3) Plants (AE)
- Deer Wintering Area (AE)

**NHI Element Occurrence (VTFW)**

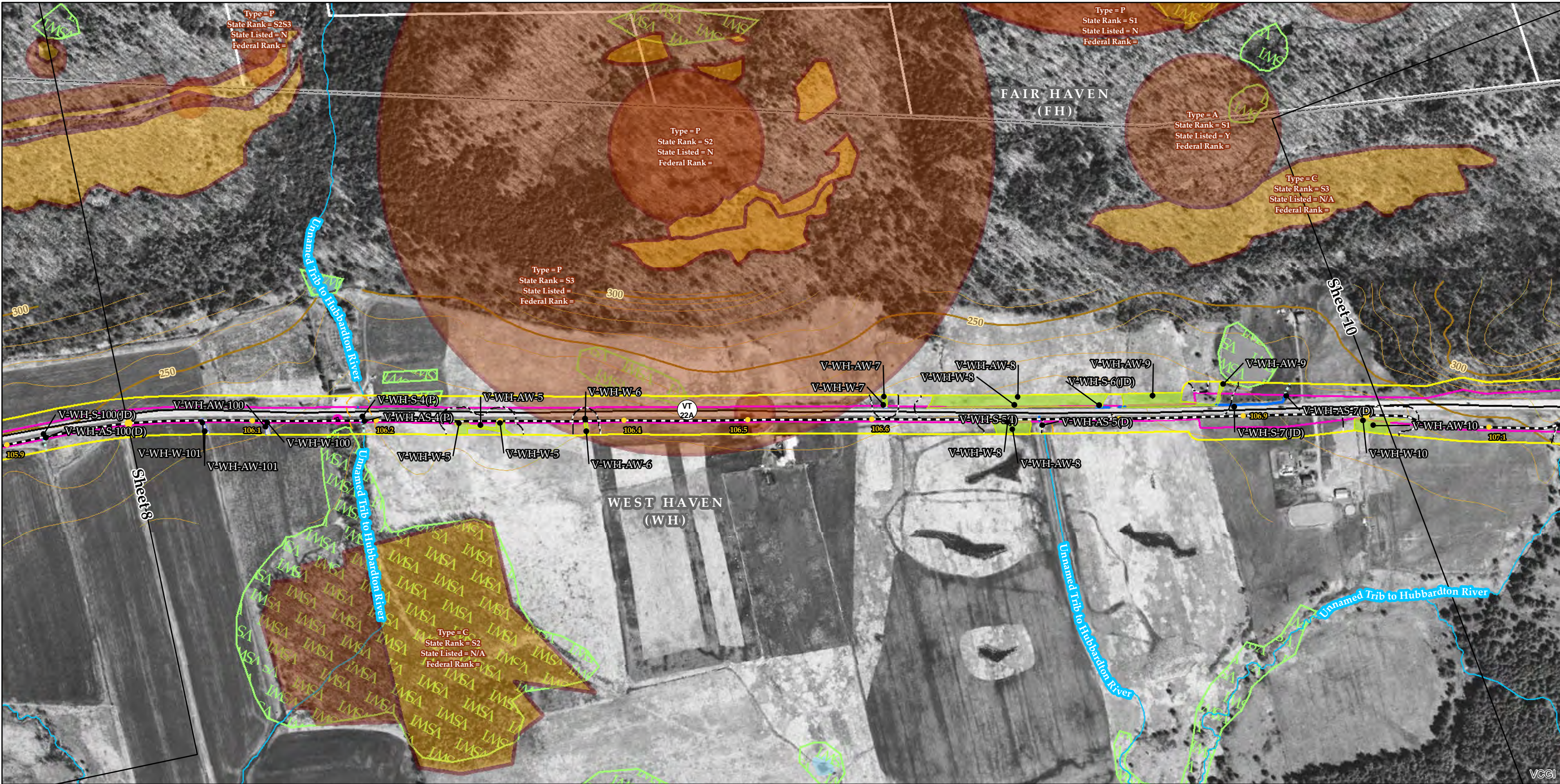
- RTEs
- Significant Natural Community
- Bear Crossing (VTFW)
- Bear Feeding (VTFW)
- Deer Wintering Area (ANR)
- VSWI Wetland (ANR)
- Named VHD Stream (VCGI)
- Unnamed VHD Stream (VCGI)

**Floodway (FEMA)**

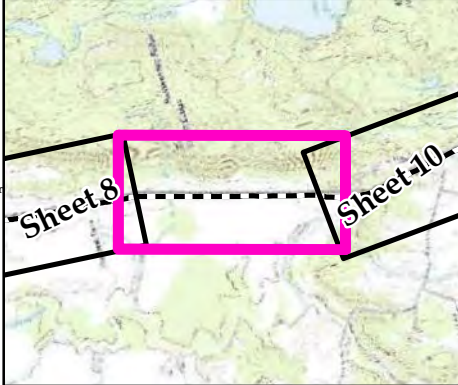
- 100 year floodplain (FEMA)
- River Corridor (VTDEC)
- Waterbody (VHD)
- Town Boundary (VCGI)
- Country Boundary (VCGI)
- Road (VTrans)
- 50 Ft. Contour
- 10 Ft. Contour

**TDI - NECPL Project Overland Component**  
**Grand Isle, Rutland, & Windsor Counties, VT**  
**Natural Resource Map Series**  
Sheet Number 8 of 51  
December 2, 2014





Sources: Background provided by VCGI (2007-2013); Provided by VCGI: Roads by VTrans (2012); NRCS Soils by NRCS (2008); Streams & Waterbodies by VHD (2010), VSWI Wetlands by ANR (2013), Deer Wintering Area by ANR (2013), County and Town Boundaries by VCGI (2012); Bear Crossing & Feeding Data by VT Fish & Wildlife (2001) Provided by TRC: Contours (2014), Conceptual Project Alignment (2014), VTrans ROW (2014), Parcel Boundaries (2009-2013) 100-year flood & Floodway compiled by TRC from FEMA (2014), Wetland & Stream Delineations by TRC & VHB (2014); Bat tree, Natural Community and RTE data assessments completed by Arrowwood Environmental (2014); River Corridors provided by VTDEC (2014).



- NECPL Proposed Overland Alignment (TRC)
- Horizontal Directional Drilling (HDD)
  - Jack and Bore
  - Terrestrial Cable (Trenching)
  - Project Parcel
  - Parcel Boundary
  - Study Area
  - Approximate Study Area
  - Sheet Outline

- Proposed Class II Wetland (TRC/VHB)
- Proposed Class III Wetland (TRC/VHB)
- Proposed 50' Class II Wetland Buffer (VHB)
- Approximate Stream (TRC/VHB)
- Delineated Stream (TRC/VHB)
- RTE Plants (AE)
- Natural Resource Buffer (VHB)
- Potential Bat Tree (AE)
- Natural Community (AE)
- Uncommon (S3) Plants (AE)
- Deer Wintering Area (AE)

- NHI Element Occurrence (VTFW)
- RTEs
  - Significant Natural Community
  - Bear Crossing (VTFW)
  - Bear Feeding (VTFW)
  - Deer Wintering Area (ANR)
  - VSWI Wetland (ANR)
  - Named VHD Stream (VCGI)
  - Unnamed VHD Stream (VCGI)

- Floodway (FEMA)
- 100 year floodplain (FEMA)
- River Corridor (VTDEC)
- Waterbody (VHD)
- Town Boundary (VCGI)
- Country Boundary (VCGI)
- Road (VTrans)
- 50 Ft. Contour
- 10 Ft. Contour

**TDI - NECPL Project  
Overland Component  
Grand Isle, Rutland, &  
Windsor Counties, VT  
Natural Resource Map Series**

Sheet Number 9 of 51  
December 2, 2014

400 200 0 400 Feet









Sources: Background provided by VCGI (2007-2013); Provided by VCGI: Roads by VTrans (2012); NRCS Soils by NRCS (2008); Streams & Waterbodies by VHD (2010), VSWI Wetlands by ANR (2013), Deer Wintering Area by ANR (2013), County and Town Boundaries by VCGI (2012); Bear Crossing & Feeding Data by VT Fish & Wildlife (2001) Provided by TRC: Contours (2014), Conceptual Project Alignment (2014), VTrans ROW (2014), Parcel Boundaries (2009-2013) 100-year flood & Floodway compiled by TRC from FEMA (2014), Wetland & Stream Delineations by TRC & VHB (2014); Bat tree, Natural Community and RTE data assessments completed by Arrowwood Environmental (2014); River Corridors provided by VTDEC (2014).

NECPL Proposed Overland Alignment (TRC)

- Horizontal Directional Drilling (HDD)
- Jack and Bore
- Terrestrial Cable (Trenching)
- Project Parcel
- Parcel Boundary
- Study Area
- Approximate Study Area
- Sheet Outline

Proposed Class II Wetland (TRC/VHB)

- Proposed Class III Wetland (TRC/VHB)
- Proposed 50' Class II Wetland Buffer (VHB)
- Approximate Stream (TRC/VHB)
- Delineated Stream (TRC/VHB)
- RTE Plants (AE)
- Natural Resource Buffer (VHB)
- Potential Bat Tree (AE)
- Natural Community (AE)
- Uncommon (S3) Plants (AE)
- Deer Wintering Area (AE)

NHI Element Occurrence (VTFW)

- RTEs
- Significant Natural Community
- Bear Crossing (VTFW)
- Bear Feeding (VTFW)
- Deer Wintering Area (ANR)
- VSWI Wetland (ANR)
- Named VHD Stream (VCGI)
- Unnamed VHD Stream (VCGI)

Floodway (FEMA)

- 100 year floodplain (FEMA)
- River Corridor (VTDEC)
- Waterbody (VHD)
- Town Boundary (VCGI)
- Country Boundary (VCGI)
- Road (VTrans)
- 50 Ft. Contour
- 10 Ft. Contour

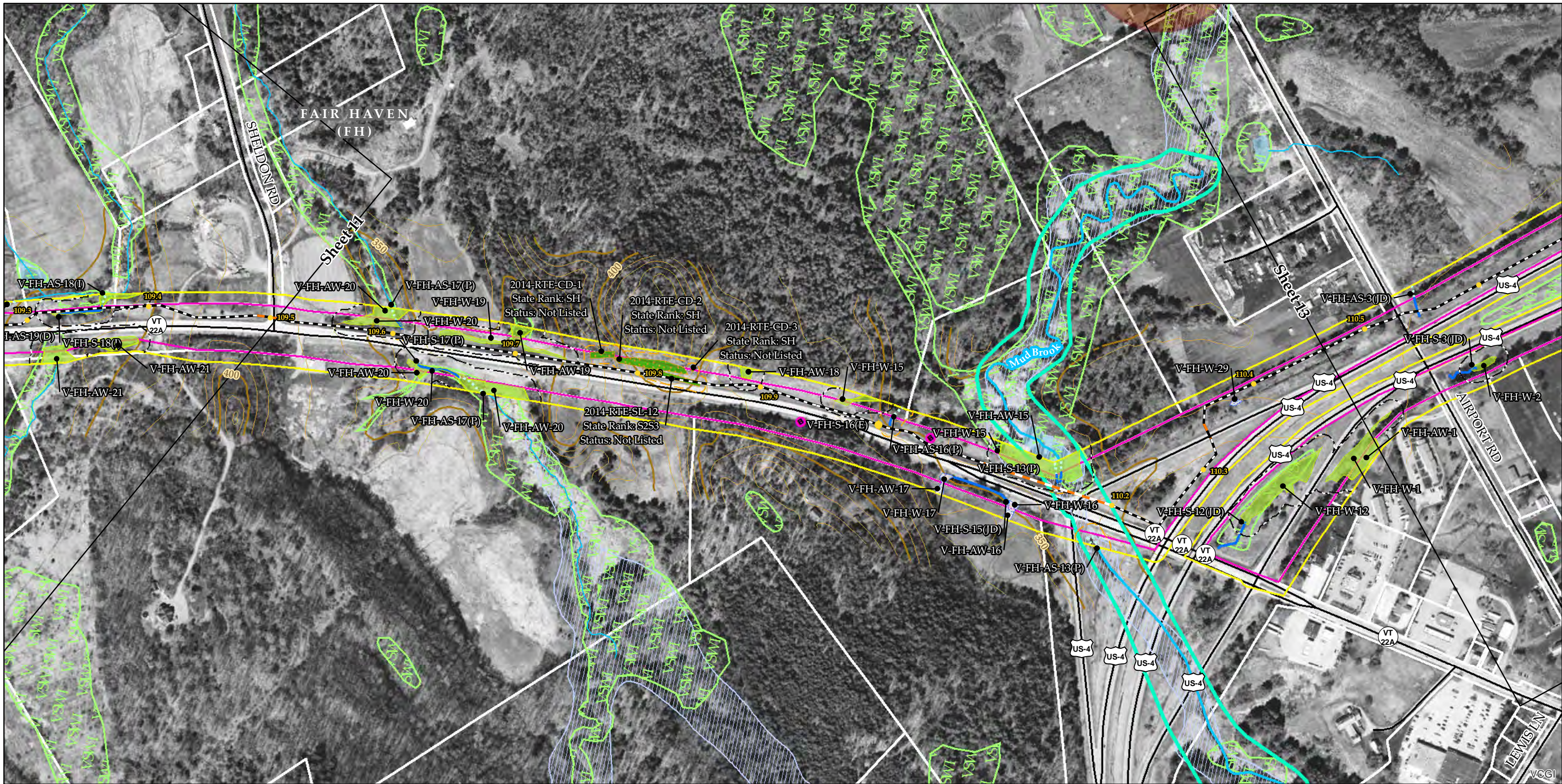
### TDI - NECPL Project Overland Component

### Grand Isle, Rutland, & Windsor Counties, VT

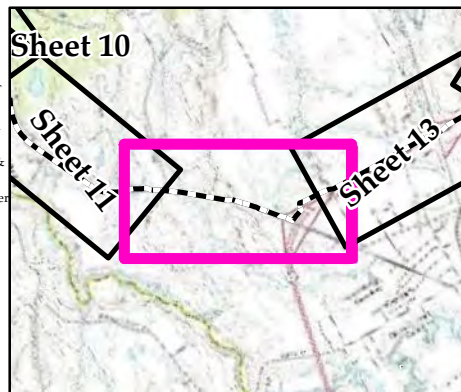
### Natural Resource Map Series

Sheet Number 11 of 51  
December 2, 2014





Sources: Background provided by VCGI (2007-2013); Provided by VCGI: Roads by VTrans (2012); NRCS Soils by NRCS (2008); Streams & Waterbodies by VHD (2010); VSWI Wetlands by ANR (2013); Deer Wintering Area by ANR (2013); County and Town Boundaries by VCGI (2012); Bear Crossing & Feeding Data by VT Fish & Wildlife (2001) Provided by TRC: Contours (2014); Conceptual Project Alignment (2014); VTrans ROW (2014); Parcel Boundaries (2009-2013) 100-year flood & Floodway compiled by TRC from FEMA (2014); Wetland & Stream Delineations by TRC & VHB (2014); Bat tree, Natural Community and RTE data assessments completed by Arrowwood Environmental (2014); River Corridors provided by VTDEC (2014).



- NECPL Proposed Overland Alignment (TRC)
- Horizontal Directional Drilling (HDD)
  - Jack and Bore
  - Terrestrial Cable (Trenching)
  - Project Parcel
  - Parcel Boundary
  - Study Area
  - Approximate Study Area
  - Sheet Outline

- Proposed Class II Wetland (TRC/VHB)
- Proposed Class III Wetland (TRC/VHB)
- Proposed 50' Class II Wetland Buffer (VHB)
- Approximate Stream (TRC/VHB)
- Delineated Stream (TRC/VHB)
- RTE Plants (AE)
- Natural Resource Buffer (VHB)
- Potential Bat Tree (AE)
- Natural Community (AE)
- Uncommon (S3) Plants (AE)
- Deer Wintering Area (AE)

- NHI Element Occurrence (VTFW)
- RTEs
  - Significant Natural Community
  - Bear Crossing (VTFW)
  - Bear Feeding (VTFW)
  - Deer Wintering Area (ANR)
  - VSWI Wetland (ANR)
  - Named VHD Stream (VCGI)
  - Unnamed VHD Stream (VCGI)

- Floodway (FEMA)
- 100 year floodplain (FEMA)
- River Corridor (VTDEC)
- Waterbody (VHD)
- Town Boundary (VCGI)
- Country Boundary (VCGI)
- Road (VTrans)
- 50 Ft. Contour
- 10 Ft. Contour

## TDI - NECPL Project Overland Component Grand Isle, Rutland, & Windsor Counties, VT Natural Resource Map Series

Sheet Number 12 of 51  
December 2, 2014



400 200 0 400  
Feet





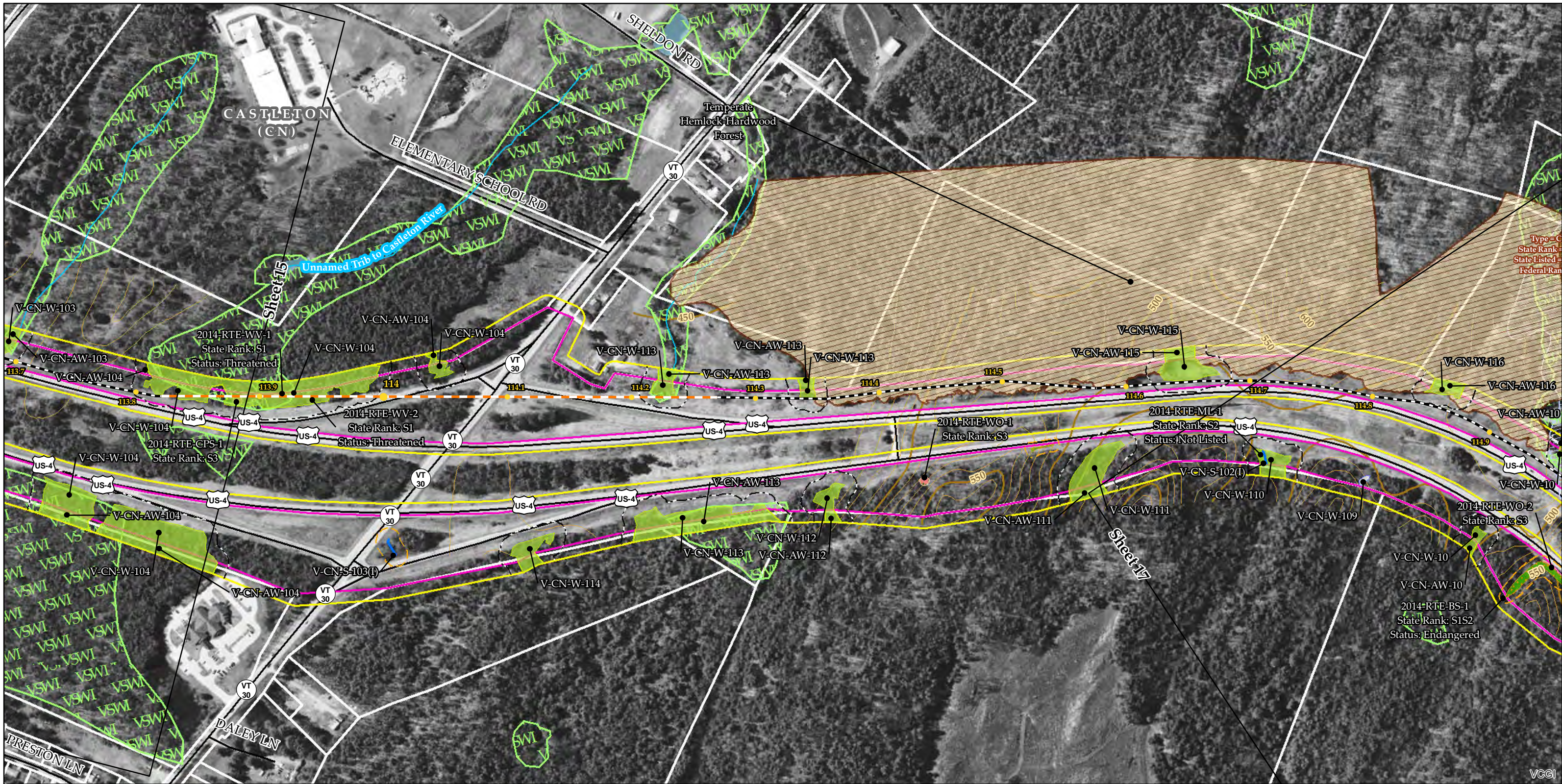




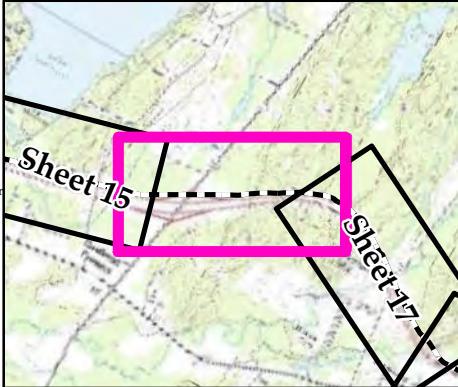








Sources: Background provided by VCGI (2007-2013); Provided by VCGI: Roads by VTrans (2012); NRCS Soils by NRCS (2008); Streams & Waterbodies by VHD (2010); VSWI Wetlands by ANR (2013); Deer Wintering Area by ANR (2013); County and Town Boundaries by VCGI (2012); Bear Crossing & Feeding Data by VT Fish & Wildlife (2001) Provided by TRC: Contours (2014); Conceptual Project Alignment (2014); VTrans ROW (2014); Parcel Boundaries (2009-2013) 100-year flood & Floodway compiled by TRC from FEMA (2014); Wetland & Stream Delineations by TRC & VHB (2014); Bat tree, Natural Community and RTE data assessments completed by Arrowwood Environmental (2014); River Corridors provided by VTDEC (2014).



- NECPL Proposed Overland Alignment (TRC)
- Horizontal Directional Drilling (HDD)
  - Jack and Bore
  - Terrestrial Cable (Trenching)
  - Project Parcel
  - Parcel Boundary
  - Study Area
  - Approximate Study Area
  - Sheet Outline

- Proposed Class II Wetland (TRC/VHB)
- Proposed Class III Wetland (TRC/VHB)
  - Proposed 50' Class II Wetland Buffer (VHB)
  - Approximate Stream (TRC/VHB)
  - Delineated Stream (TRC/VHB)
  - RTE Plants (AE)
  - Natural Resource Buffer (VHB)
  - Potential Bat Tree (AE)
  - Natural Community (AE)
  - Uncommon (S3) Plants (AE)
  - Deer Wintering Area (AE)

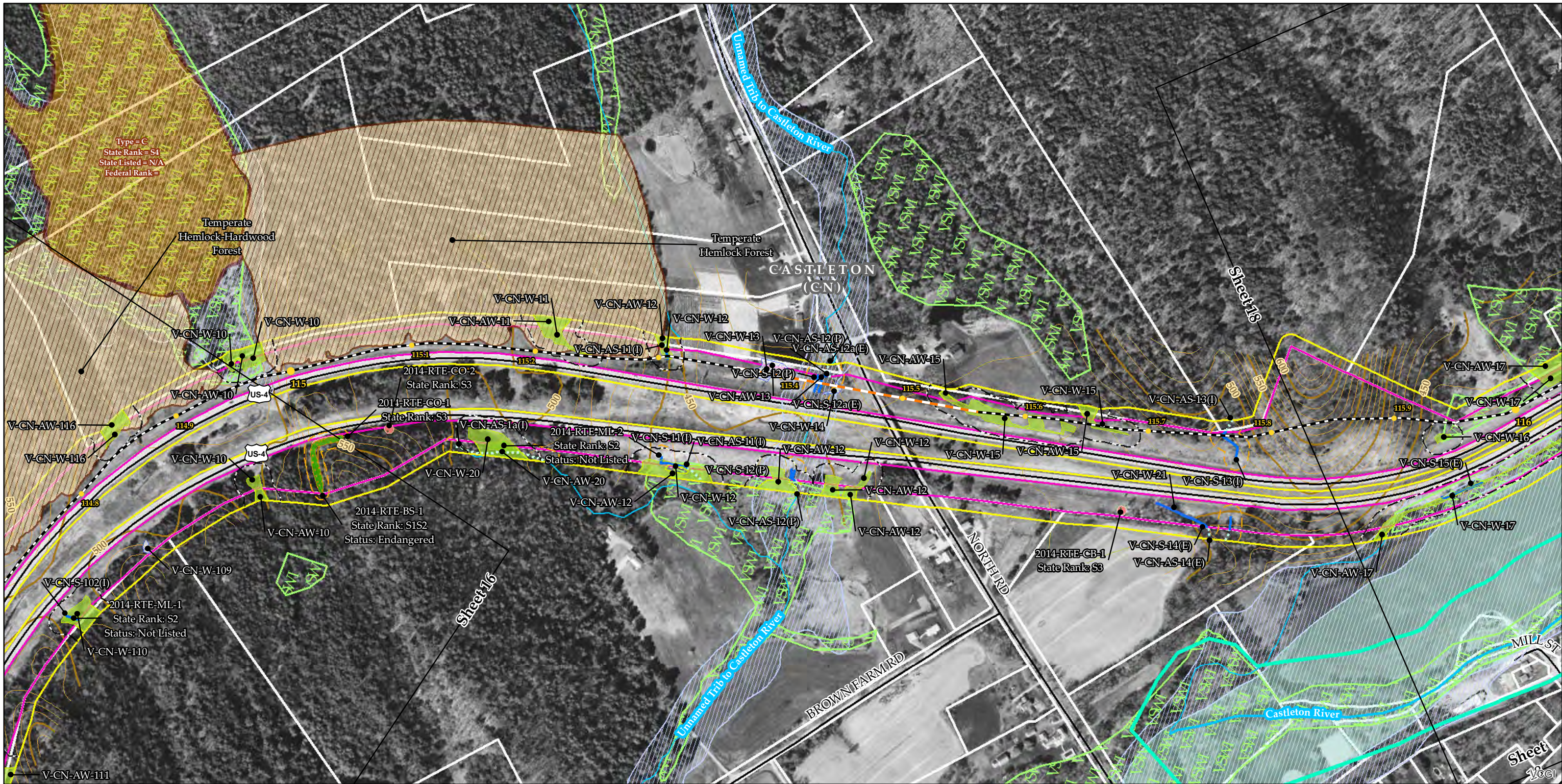
- NHI Element Occurrence (VTFW)
- RTEs
  - Significant Natural Community
  - Bear Crossing (VTFW)
  - Bear Feeding (VTFW)
  - Deer Wintering Area (ANR)
  - VSWI Wetland (ANR)
  - Named VHD Stream (VCGI)
  - Unnamed VHD Stream (VCGI)

- Floodway (FEMA)
- 100 year floodplain (FEMA)
  - River Corridor (VTDEC)
  - Waterbody (VHD)
  - Town Boundary (VCGI)
  - Country Boundary (VCGI)
  - Road (VTrans)
  - 50 Ft. Contour
  - 10 Ft. Contour

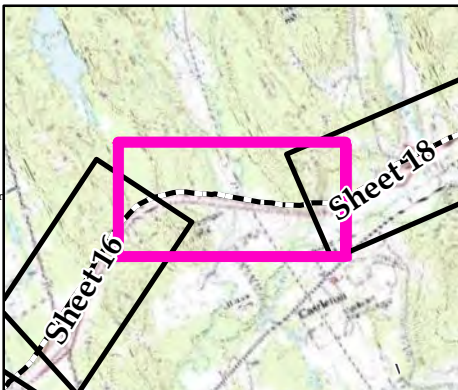
**TDI - NECPL Project Overland Component**  
**Grand Isle, Rutland, & Windsor Counties, VT**  
**Natural Resource Map Series**  
Sheet Number 16 of 51  
December 2, 2014

400 200 0 400 Feet





Sources: Background provided by VCGI (2007-2013); Provided by VCGI: Roads by VTrans (2012); NRCS Soils by NRCS (2008); Streams & Waterbodies by VHD (2010), VSWI Wetlands by ANR (2013), Deer Wintering Area by ANR (2013), County and Town Boundaries by VCGI (2012); Bear Crossing & Feeding Data by VT Fish & Wildlife (2001) Provided by TRC: Contours (2014), Conceptual Project Alignment (2014), VTrans ROW (2014), Parcel Boundaries (2009-2013) 100-year flood & Floodway compiled by TRC from FEMA (2014), Wetland & Stream Delineations by TRC & VHB (2014); Bat tree, Natural Community and RTE data assessments completed by Arrowwood Environmental (2014); River Corridors provided by VTDEC (2014).



- NECPL Proposed Overland Alignment (TRC)
- Horizontal Directional Drilling (HDD)
  - Jack and Bore
  - Terrestrial Cable (Trenching)
  - Project Parcel
  - Parcel Boundary
  - Study Area
  - Approximate Study Area
  - Sheet Outline

- Proposed Class II Wetland (TRC/VHB)
- Proposed Class III Wetland (TRC/VHB)
- Proposed 50' Class II Wetland Buffer (VHB)
- Approximate Stream (TRC/VHB)
- Delineated Stream (TRC/VHB)
- RTE Plants (AE)
- Natural Resource Buffer (VHB)
- Potential Bat Tree (AE)
- Natural Community (AE)
- Uncommon (S3) Plants (AE)
- Deer Wintering Area (AE)

- NHI Element Occurrence (VTFW)
- RTEs
  - Significant Natural Community
  - Bear Crossing (VTFW)
  - Bear Feeding (VTFW)
  - Deer Wintering Area (ANR)
  - VSWI Wetland (ANR)
  - Named VHD Stream (VCGI)
  - Unnamed VHD Stream (VCGI)

- Floodway (FEMA)
- 100 year floodplain (FEMA)
- River Corridor (VTDEC)
- Waterbody (VHD)
- Town Boundary (VCGI)
- Country Boundary (VCGI)
- Road (VTrans)
- 50 Ft. Contour
- 10 Ft. Contour

**TDI - NECPL Project  
Overland Component  
Grand Isle, Rutland, &  
Windsor Counties, VT  
Natural Resource Map Series**

Sheet Number 17 of 51  
December 2, 2014

400 200 0 400  
Feet