



DOE/EIS-0503

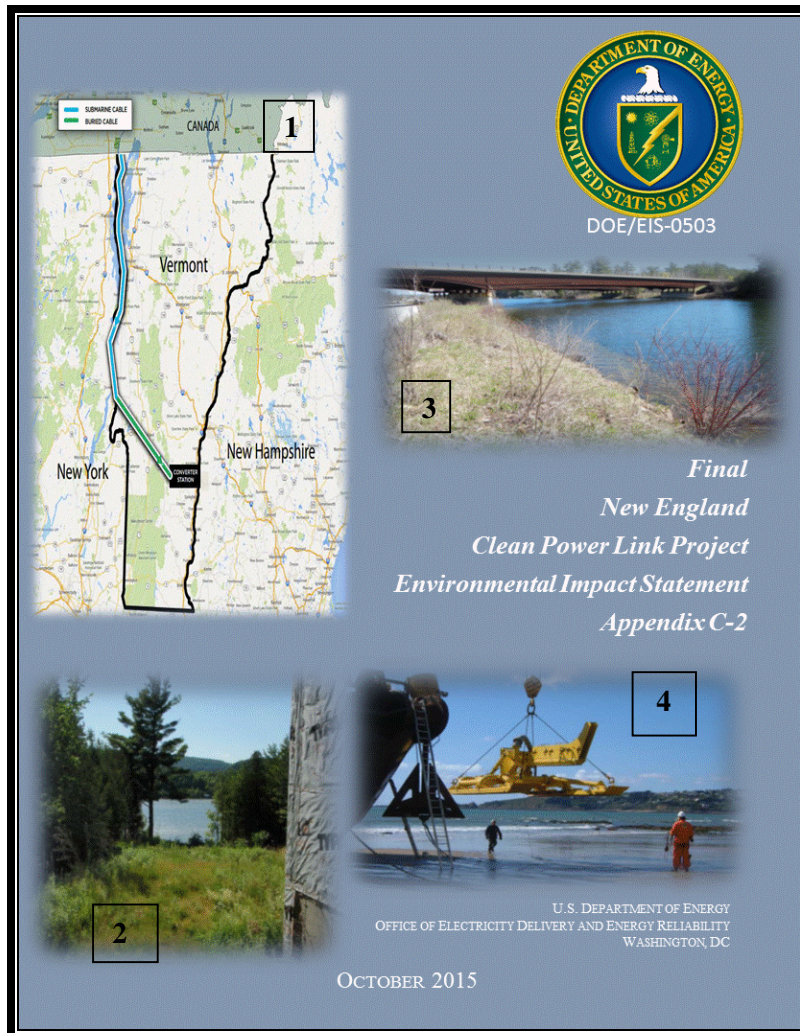


*Final
New England
Clean Power Link Project
Environmental Impact Statement
Appendix C-2*



U.S. DEPARTMENT OF ENERGY
OFFICE OF ELECTRICITY DELIVERY AND ENERGY RELIABILITY
WASHINGTON, DC

OCTOBER 2015



Cover Photo Credits

1. TDI-NE

(<http://wamc/files/styles/default/public/201410/new-england-clean-power-link-map-ctsy-tdi-new-england.jpg> alt="")>)

2. NECPL exit from Lake Champlain (Benson, Vermont) courtesy of TDI-NE

3. Lake Bomoseen, Fair Haven, Vermont courtesy of TDI-NE

4. TDI-NE 2014a

FINAL

**NEW ENGLAND CLEAN POWER LINK PROJECT
ENVIRONMENTAL IMPACT STATEMENT**

DOE/EIS-0503

VOLUME II: APPENDICES

**U.S. DEPARTMENT OF ENERGY
OFFICE OF ELECTRICITY DELIVERY
AND ENERGY RELIABILITY**



COOPERATING AGENCIES

**U.S. ENVIRONMENTAL PROTECTION AGENCY
U.S. ARMY CORPS OF ENGINEERS
U.S. COAST GUARD**

OCTOBER 2015

This Page Intentionally Left Blank

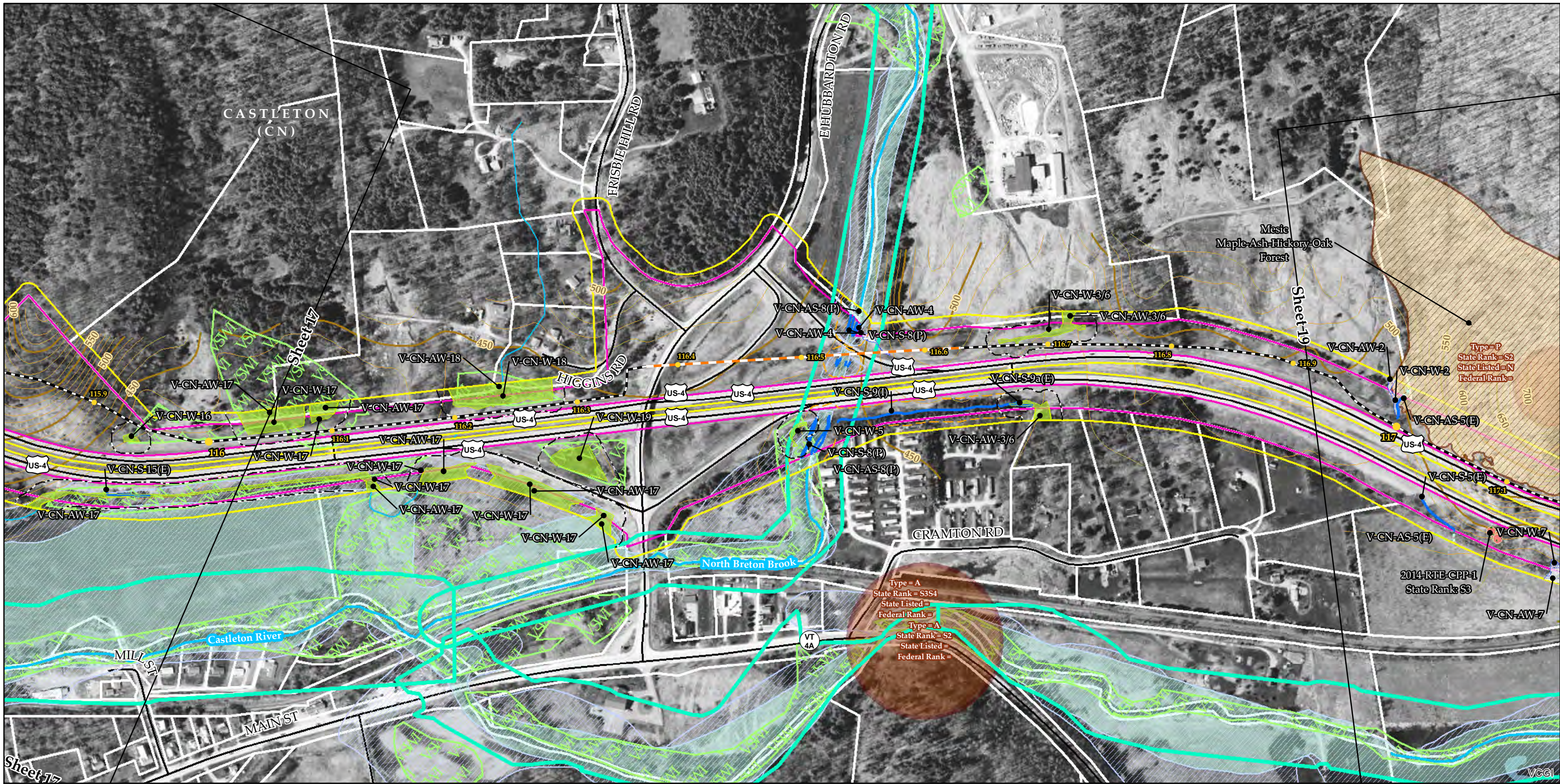
Table of Contents

Appendix A	Appendix A	Scoping Summary Report A-1
Appendix B	Appendix B	EIS Distribution List B-1
Appendix C	Appendix C	NECPL Project Transmission System Detailed Maps C-1
Appendix D	Appendix D	Alternatives Considered but Eliminated From Further Analysis D-1
Appendix E	Appendix E	CWA Section 404 and Section 10 Permit Application E-1
Appendix F	Appendix F	Vermont 248 Application Cover Letter F-1
Appendix G	Appendix G	TDI-NE General Mitigation Strategies G-1
Appendix H	Appendix H	ESA Section 7 Documentation H-1
Appendix I	Appendix I	NHPA Section 106 Documentation I-1
Appendix J	Appendix J	Environmental Justice Analysis Background J-1
Appendix K	Appendix K	Air Quality Analysis Background K-1
Appendix L	Appendix L	Contractor Disclosure Statement L-1
Appendix M	Appendix M	Comment Response Document M-1

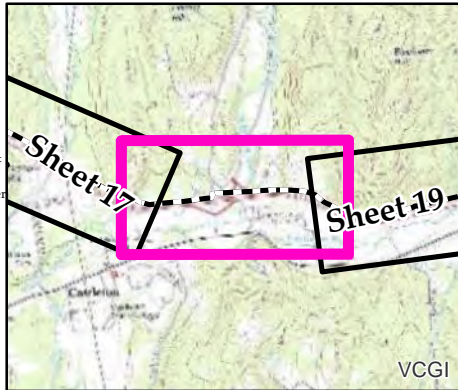
This Page Intentionally Left Blank

APPENDIX C NECPL PROJECT TRANSMISSION SYSTEM DETAILED MAPS

This Page Intentionally Left Blank



Sources: Background provided by VCGI (2007-2013); Provided by VCGI: Roads by VTrans (2012); NRCS Soils by NRCS (2008); Streams & Waterbodies by VHD (2010); VSWI Wetlands by ANR (2013); Deer Wintering Area by ANR (2013); County and Town Boundaries by VCGI (2012); Bear Crossing & Feeding Data by VT Fish & Wildlife (2001) Provided by TRC: Contours (2014); Conceptual Project Alignment (2014); VTrans ROW (2014); Parcel Boundaries (2009-2013) 100-year flood & Floodway compiled by TRC from FEMA (2014); Wetland & Stream Delineations by TRC & VHB (2014); Bat tree, Natural Community and RTE data assessments completed by Arrowwood Environmental (2014); River Corridors provided by VTDEC (2014).



- NECPL Proposed Overland Alignment (TRC)
- Horizontal Directional Drilling (HDD)
 - Jack and Bore
 - Terrestrial Cable (Trenching)
 - Project Parcel
 - Parcel Boundary
 - Study Area
 - Approximate Study Area
 - Sheet Outline

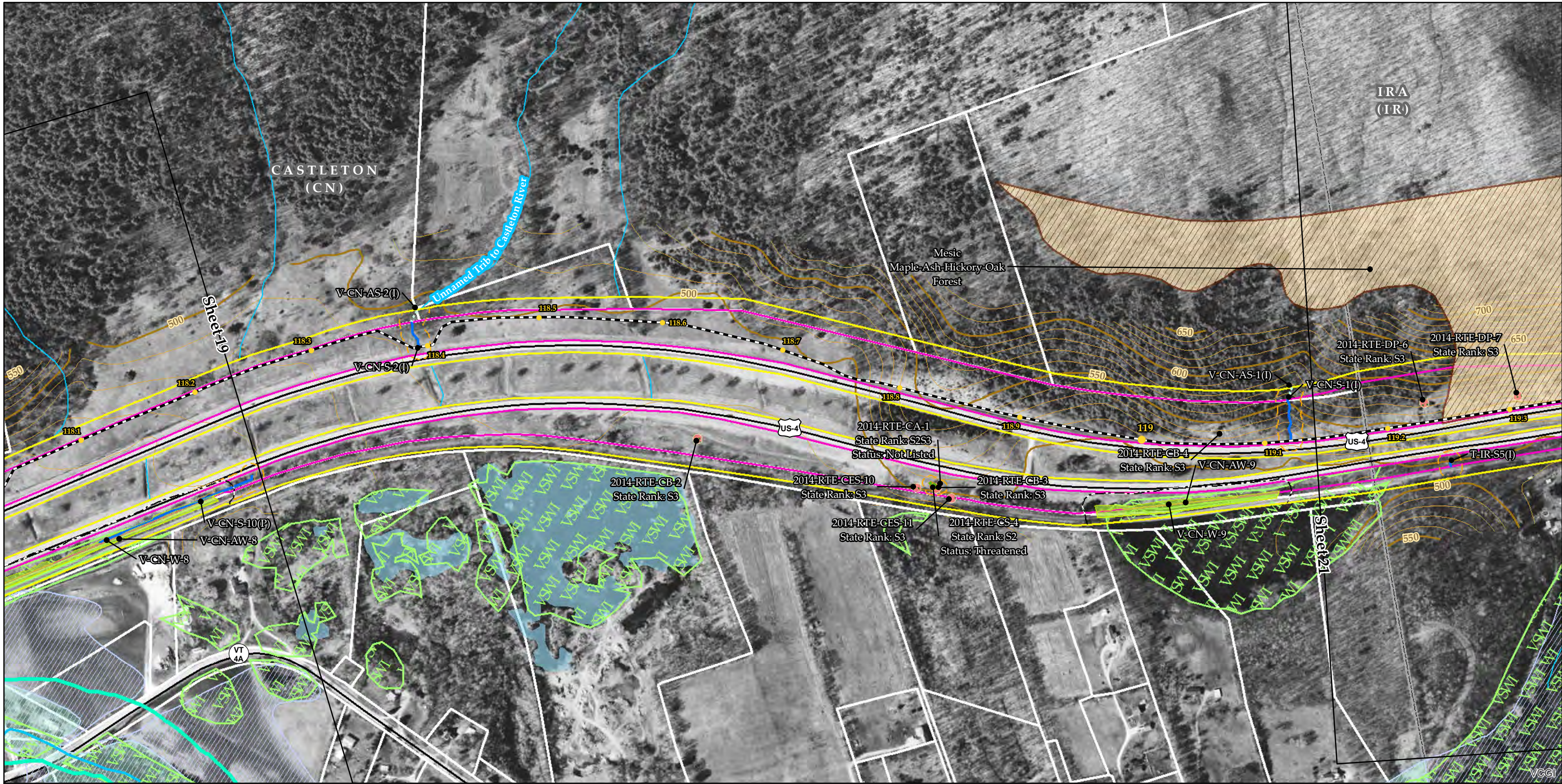
- Proposed Class II Wetland (TRC/VHB)
- Proposed Class III Wetland (TRC/VHB)
 - Proposed 50' Class II Wetland Buffer (VHB)
 - Approximate Stream (TRC/VHB)
 - Delineated Stream (TRC/VHB)
 - RTE Plants (AE)
 - Natural Resource Buffer (VHB)
 - Potential Bat Tree (AE)
 - Natural Community (AE)
 - Uncommon (S3) Plants (AE)
 - Deer Wintering Area (AE)

- NHI Element Occurrence (VTFW)
- RTEs
 - Significant Natural Community
 - Bear Crossing (VTFW)
 - Bear Feeding (VTFW)
 - Deer Wintering Area (ANR)
 - VSWI Wetland (ANR)
 - Named VHD Stream (VCGI)
 - Unnamed VHD Stream (VCGI)

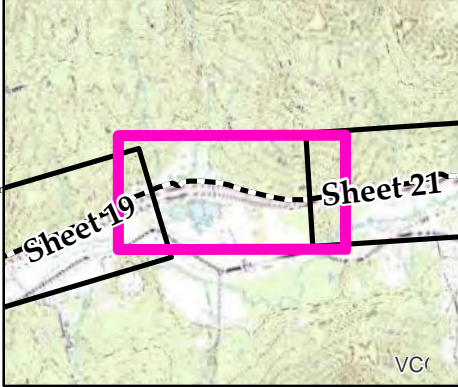
- Floodway (FEMA)
- 100 year floodplain (FEMA)
 - River Corridor (VTDEC)
 - Waterbody (VHD)
 - Town Boundary (VCGI)
 - Country Boundary (VCGI)
 - Road (VTrans)
 - 50 Ft. Contour
 - 10 Ft. Contour

TDI - NECPL Project Overland Component
Grand Isle, Rutland, & Windsor Counties, VT
Natural Resource Map Series
Sheet Number 18 of 51
December 2, 2014

400 200 0 400 Feet



Sources: Background provided by VCGI (2007-2013); Provided by VCGI: Roads by VTrans (2012); NRCS Soils by NRCS (2008); Streams & Waterbodies by VHD (2010); VSWI Wetlands by ANR (2013); Deer Wintering Area by ANR (2013); County and Town Boundaries by VCGI (2012); Bear Crossing & Feeding Data by VT Fish & Wildlife (2001) Provided by TRC: Contours (2014); Conceptual Project Alignment (2014); VTrans ROW (2014); Parcel Boundaries (2009-2013) 100-year flood & Floodway compiled by TRC from FEMA (2014); Wetland & Stream Delineations by TRC & VHB (2014); Bat tree, Natural Community and RTE data assessments completed by Arrowwood Environmental (2014); River Corridors provided by VTDEC (2014).



- NECPL Proposed Overland Alignment (TRC)
- Horizontal Directional Drilling (HDD)
 - Jack and Bore
 - Terrestrial Cable (Trenching)
 - Project Parcel
 - Parcel Boundary
 - Study Area
 - Approximate Study Area
 - Sheet Outline

- Proposed Class II Wetland (TRC/VHB)
- Proposed Class III Wetland (TRC/VHB)
- Proposed 50' Class II Wetland Buffer (VHB)
- Approximate Stream (TRC/VHB)
- Delineated Stream (TRC/VHB)
- RTE Plants (AE)
- Natural Resource Buffer (VHB)
- Potential Bat Tree (AE)
- Natural Community (AE)
- Uncommon (S3) Plants (AE)
- Deer Wintering Area (AE)

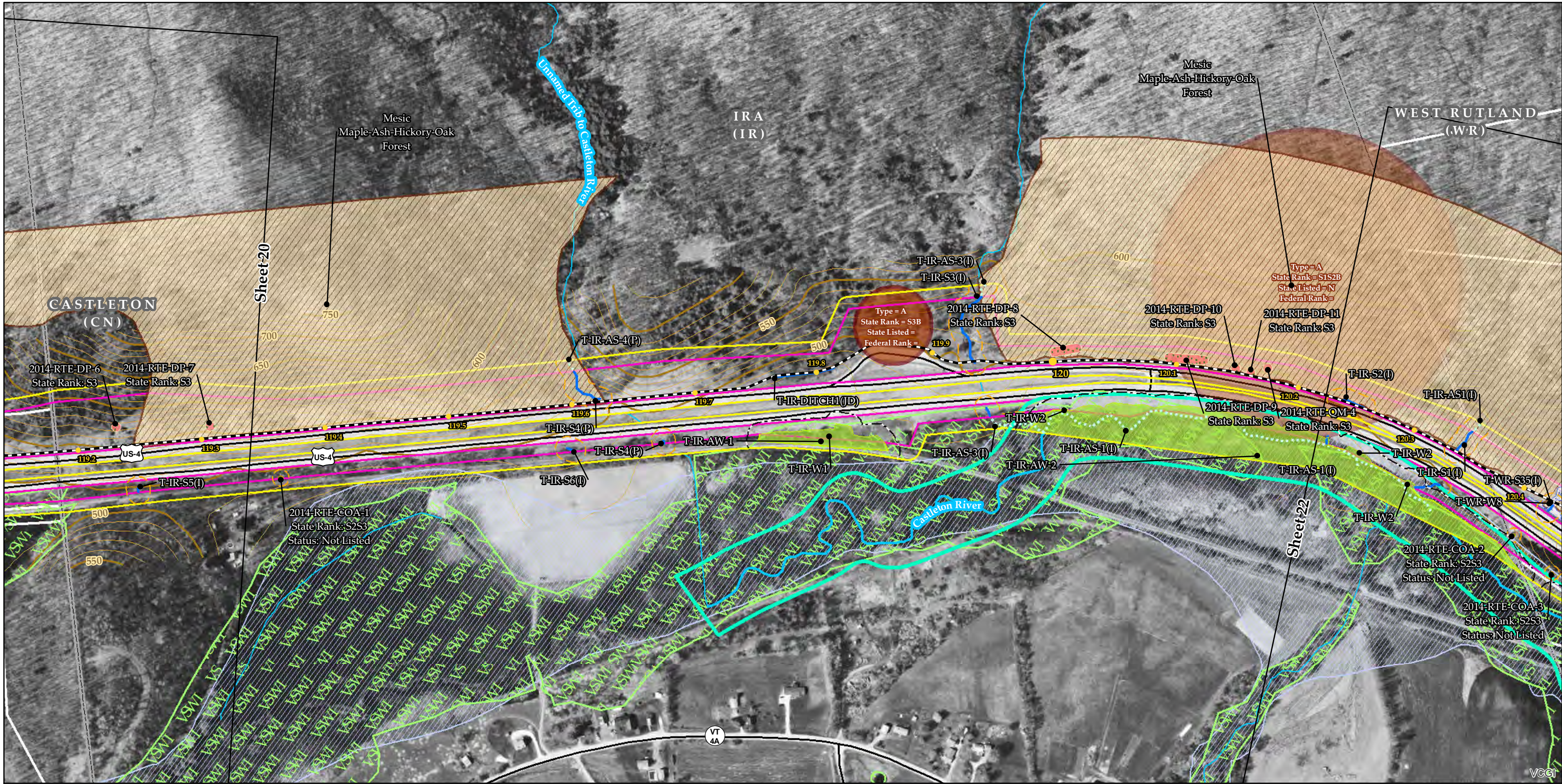
- NHI Element Occurrence (VTFW)
- RTEs
 - Significant Natural Community
 - Bear Crossing (VTFW)
 - Bear Feeding (VTFW)
 - Deer Wintering Area (ANR)
 - VSWI Wetland (ANR)
 - Named VHD Stream (VCGI)
 - Unnamed VHD Stream (VCGI)

- Floodway (FEMA)
- 100 year floodplain (FEMA)
- River Corridor (VTDEC)
- Waterbody (VHD)
- Town Boundary (VCGI)
- Country Boundary (VCGI)
- Road (VTrans)
- 50 Ft. Contour
- 10 Ft. Contour

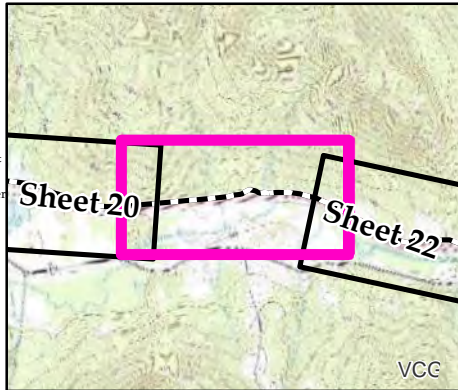
**TDI - NECPL Project
Overland Component
Grand Isle, Rutland, &
Windsor Counties, VT
Natural Resource Map Series**

Sheet Number 20 of 51
December 2, 2014

400 200 0 400
Feet



Sources: Background provided by VCGI (2007-2013); Provided by VCGI: Roads by VTrans (2012); NRCS Soils by NRCS (2008); Streams & Waterbodies by VHD (2010); VSWI Wetlands by ANR (2013); Deer Wintering Area by ANR (2013); County and Town Boundaries by VCGI (2012); Bear Crossing & Feeding Data by VT Fish & Wildlife (2001) Provided by TRC: Contours (2014); Conceptual Project Alignment (2014); VTrans ROW (2014); Parcel Boundaries (2009-2013) 100-year flood & Floodway compiled by TRC from FEMA (2014); Wetland & Stream Delineations by TRC & VHB (2014); Bat tree, Natural Community and RTE data assessments completed by Arrowwood Environmental (2014); River Corridors provided by VTDEC (2014).



- NECPL Proposed Overland Alignment (TRC)
- Horizontal Directional Drilling (HDD)
 - Jack and Bore
 - Terrestrial Cable (Trenching)
 - Project Parcel
 - Parcel Boundary
 - Study Area
 - Approximate Study Area
 - Sheet Outline

- Proposed Class II Wetland (TRC/VHB)
- Proposed Class III Wetland (TRC/VHB)
 - Proposed 50' Class II Wetland Buffer (VHB)
 - Approximate Stream (TRC/VHB)
 - Delineated Stream (TRC/VHB)
 - RTE Plants (AE)
 - Natural Resource Buffer (VHB)
 - Potential Bat Tree (AE)
 - Natural Community (AE)
 - Uncommon (S3) Plants (AE)
 - Deer Wintering Area (AE)

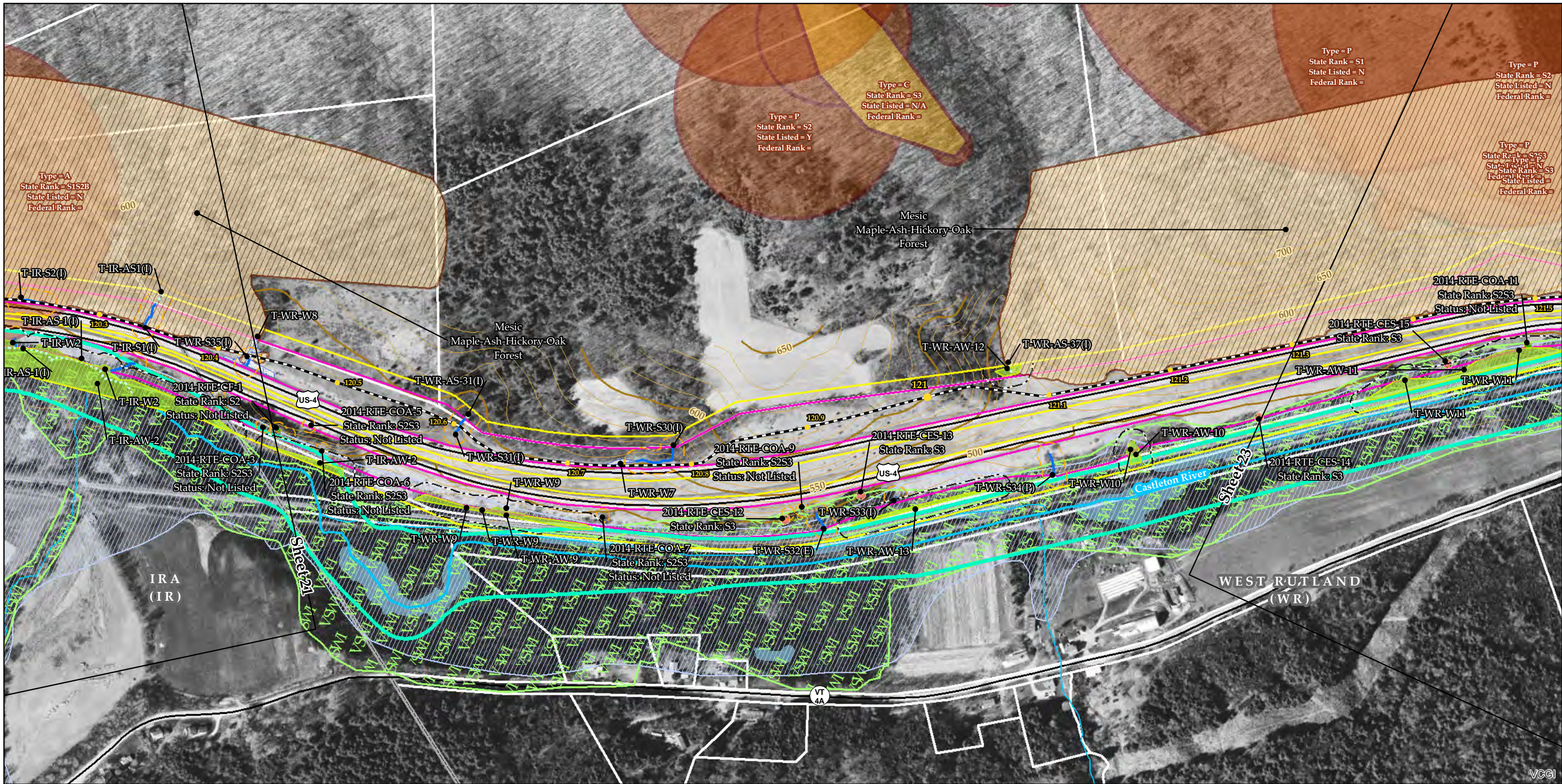
- NHI Element Occurrence (VTFW)
- RTEs
 - Significant Natural Community
 - Bear Crossing (VTFW)
 - Bear Feeding (VTFW)
 - Deer Wintering Area (ANR)
 - VSWI Wetland (ANR)
 - Named VHD Stream (VCGI)
 - Unnamed VHD Stream (VCGI)

- Floodway (FEMA)
- 100 year floodplain (FEMA)
 - River Corridor (VTDEC)
 - Waterbody (VHD)
 - Town Boundary (VCGI)
 - Country Boundary (VCGI)
 - Road (VTrans)
 - 50 Ft. Contour
 - 10 Ft. Contour

**TDI - NECPL Project
Overland Component
Grand Isle, Rutland, &
Windsor Counties, VT
Natural Resource Map Series**

Sheet Number 21 of 51
December 2, 2014

400 200 0 400
Feet



Sources: Background provided by VCGI (2007-2013); Provided by VCGI: Roads by VTrans (2012); NRCS Soils by NRCS (2008); Streams & Waterbodies by VHD (2010); VSWI Wetlands by ANR (2013); Deer Wintering Area by ANR (2013); County and Town Boundaries by VCGI (2012); Bear Crossing & Feeding Data by VT Fish & Wildlife (2001) Provided by TRC: Contours (2014); Conceptual Project Alignment (2014); VTrans ROW (2014); Parcel Boundaries (2009-2013) 100-year flood & Floodway compiled by TRC from FEMA (2014); Wetland & Stream Delineations by TRC & VHB (2014); Bat tree, Natural Community and RTE data assessments completed by Arrowwood Environmental (2014); River Corridors provided by VTDEC (2014).

NECPL Proposed Overland Alignment (TRC)

- Horizontal Directional Drilling (HDD)
- Jack and Bore
- Terrestrial Cable (Trenching)
- Project Parcel
- Parcel Boundary
- Study Area
- Approximate Study Area
- Sheet Outline

Proposed Class II Wetland (TRC/VHB)

- Proposed Class III Wetland (TRC/VHB)
- Proposed 50' Class II Wetland Buffer (VHB)
- Approximate Stream (TRC/VHB)
- Delineated Stream (TRC/VHB)
- RTE Plants (AE)
- Natural Resource Buffer (VHB)
- Potential Bat Tree (AE)
- Natural Community (AE)
- Uncommon (S3) Plants (AE)
- Deer Wintering Area (AE)

NHI Element Occurrence (VTFW)

- RTEs
- Significant Natural Community
- Bear Crossing (VTFW)
- Bear Feeding (VTFW)
- Deer Wintering Area (ANR)
- VSWI Wetland (ANR)
- Named VHD Stream (VCGI)
- Unnamed VHD Stream (VCGI)

Floodway (FEMA)

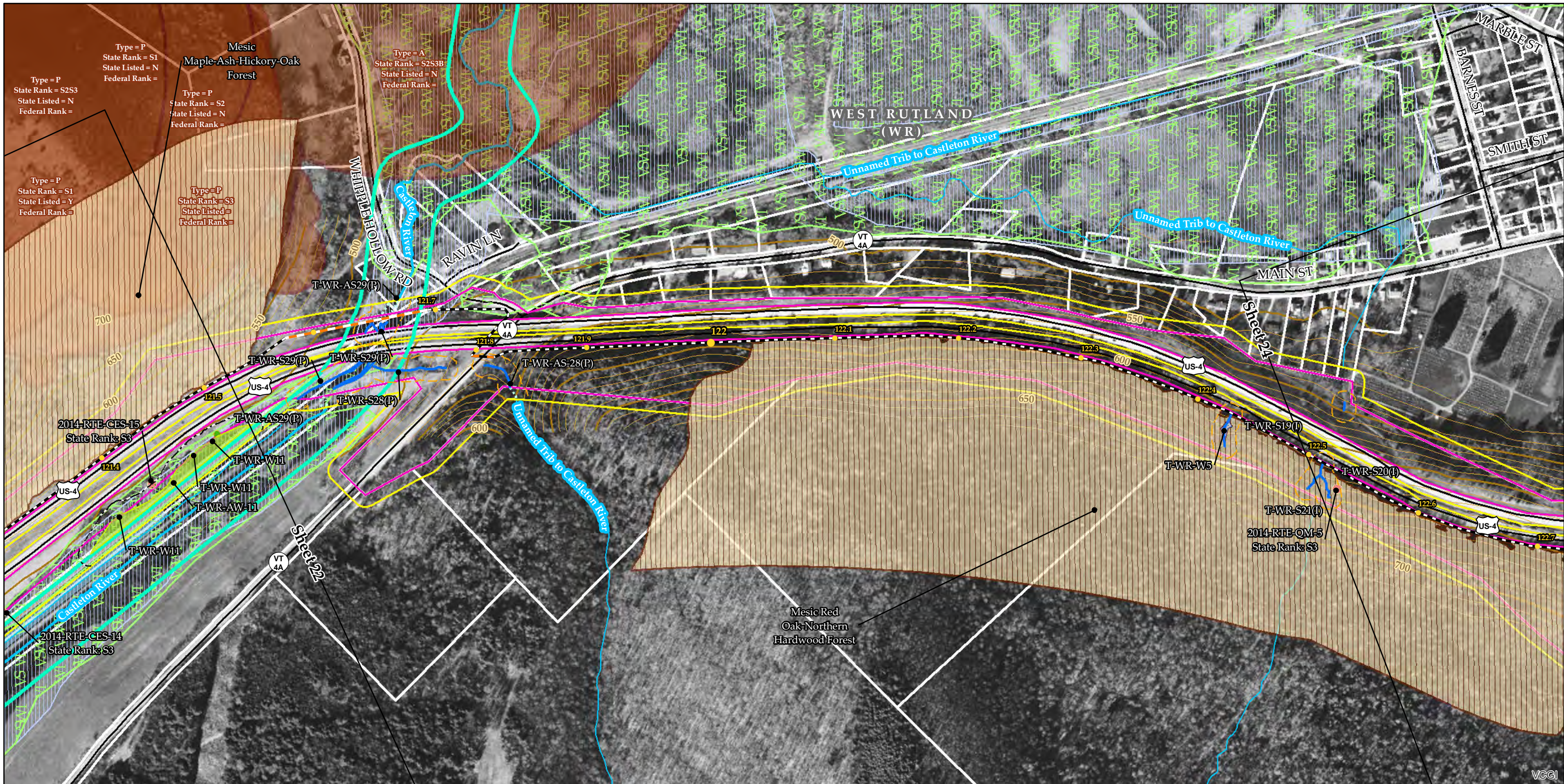
- 100 year floodplain (FEMA)
- River Corridor (VTDEC)
- Waterbody (VHD)
- Town Boundary (VCGI)
- Country Boundary (VCGI)
- Road (VTrans)
- 50 Ft. Contour
- 10 Ft. Contour

TDI - NECPL Project Overland Component

Grand Isle, Rutland, & Windsor Counties, VT

Natural Resource Map Series

Sheet Number 22 of 51
December 2, 2014



Sources: Background provided by VCGI (2007-2013); Provided by VCGI: Roads by VTrans (2012); NRCS Soils by NRCS (2008); Streams & Waterbodies by VHD (2010), VSWI Wetlands by ANR (2013), Deer Wintering Area by ANR (2013), County and Town Boundaries by VCGI (2012); Bear Crossing & Feeding Data by VT Fish & Wildlife (2001) Provided by TRC: Contours (2014), Conceptual Project Alignment (2014), VTrans ROW (2014), Parcel Boundaries (2009-2013) 100-year flood & Floodway compiled by TRC from FEMA (2014), Wetland & Stream Delineations by TRC & VHB (2014); Bat tree, Natural Community and RTE data assessments completed by Arrowwood Environmental (2014); River Corridors provided by VTDEC (2014).

NECPL Proposed Overland Alignment (TRC)

- Horizontal Directional Drilling (HDD)
- Jack and Bore
- Terrestrial Cable (Trenching)
- Project Parcel
- Parcel Boundary
- Study Area
- Approximate Study Area
- Sheet Outline

Proposed Class II Wetland (TRC/VHB)

- Proposed Class III Wetland (TRC/VHB)
- Proposed 50' Class II Wetland Buffer (VHB)
- Approximate Stream (TRC/VHB)
- Delineated Stream (TRC/VHB)
- RTE Plants (AE)
- Natural Resource Buffer (VHB)
- Potential Bat Tree (AE)
- Natural Community (AE)
- Uncommon (S3) Plants (AE)
- Deer Wintering Area (AE)

NHI Element Occurrence (VTFW)

- RTEs
- Significant Natural Community
- Bear Crossing (VTFW)
- Bear Feeding (VTFW)
- Deer Wintering Area (ANR)
- VSWI Wetland (ANR)
- Named VHD Stream (VCGI)
- Unnamed VHD Stream (VCGI)

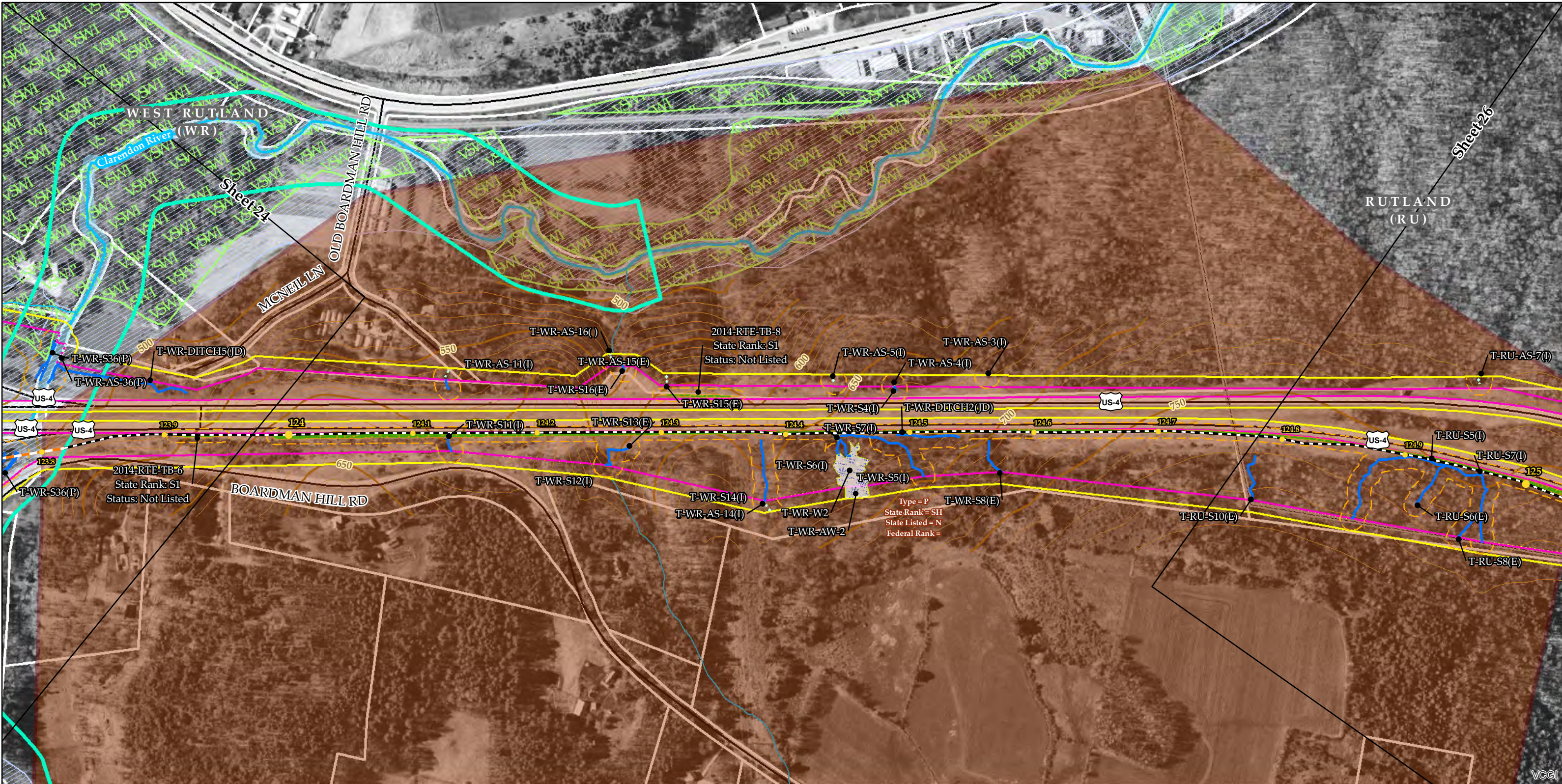
Floodway (FEMA)

- 100 year floodplain (FEMA)
- River Corridor (VTDEC)
- Waterbody (VHD)
- Town Boundary (VCGI)
- Country Boundary (VCGI)
- Road (VTrans)
- 50 Ft. Contour
- 10 Ft. Contour

TDI - NECPL Project
Overland Component
Grand Isle, Rutland, & Windsor Counties, VT
Natural Resource Map Series

Sheet Number 23 of 51
December 2, 2014

\\VTNFDATA\projects\57666.00 NE Clean Power Link\GIS\Project\NR_Maps\NRMmaps_11x17_400scale.mxd exported by:acoplin On 12/2/2014



Sources: Background provided by VCGI (2007-2013); Provided by VCGI: Roads by VTrans (2012); NRCS Soils by NRCS (2008); Streams & Waterbodies by VHD (2010); VSWI Wetlands by ANR (2013); Deer Wintering Area by ANR (2013); County and Town Boundaries by VCGI (2012); Bear Crossing & Feeding Data by VT Fish & Wildlife (2001) Provided by TRC: Contours (2014), Conceptual Project Alignment (2014), VTrans ROW (2014), Parcel Boundaries (2009-2013) 100-year flood & Floodway compiled by TRC from FEMA (2014), Wetland & Stream Delineations by TRC & VHB (2014); Bat tree, Natural Community and RTE data assessments completed by Arrowwood Environmental (2014); River Corridors provided by VTDEC (2014).

NECPL Proposed Overland Alignment (TRC)

- Horizontal Directional Drilling (HDD)
- Jack and Bore
- Terrestrial Cable (Trenching)
- Project Parcel
- Parcel Boundary
- Study Area
- Approximate Study Area
- Sheet Outline

Proposed Class II Wetland (TRC/VHB)

- Proposed Class III Wetland (TRC/VHB)
- Proposed 50' Class II Wetland Buffer (VHB)
- Approximate Stream (TRC/VHB)
- Delineated Stream (TRC/VHB)
- RTE Plants (AE)
- Natural Resource Buffer (VHB)
- Potential Bat Tree (AE)
- Natural Community (AE)
- Uncommon (S3) Plants (AE)
- Deer Wintering Area (AE)

NHI Element Occurrence (VTFW)

- RTEs
- Significant Natural Community
- Bear Crossing (VTFW)
- Bear Feeding (VTFW)
- Deer Wintering Area (ANR)
- VSWI Wetland (ANR)
- Named VHD Stream (VCGI)
- Unnamed VHD Stream (VCGI)

Floodway (FEMA)

- 100 year floodplain (FEMA)
- River Corridor (VTDEC)
- Waterbody (VHD)
- Town Boundary (VCGI)
- Country Boundary (VCGI)
- Road (VTrans)
- 50 Ft. Contour
- 10 Ft. Contour

**TDI - NECPL Project
Overland Component
Grand Isle, Rutland, &
Windsor Counties, VT**

Natural Resource Map Series

Sheet Number 25 of 51
December 2, 2014