



DOE/EIS-0503

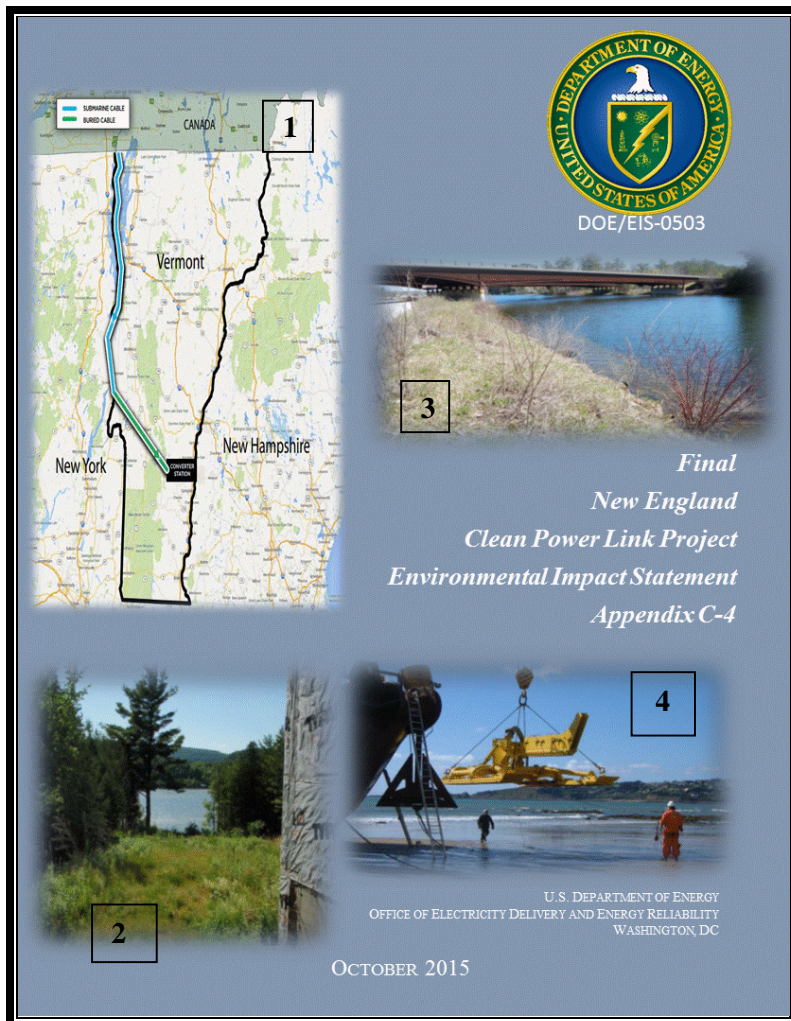


*Final
New England
Clean Power Link Project
Environmental Impact Statement
Appendix C-4*



U.S. DEPARTMENT OF ENERGY
OFFICE OF ELECTRICITY DELIVERY AND ENERGY RELIABILITY
WASHINGTON, DC

OCTOBER 2015



Cover Photo Credits

1. TDI-NE

(<http://wamc/files/styles/default/public/201410/new-england-clean-power-link-map-ctsy-tdi-new-england.jpg>" alt=" ">)

2. NECPL exit from Lake Champlain (Benson, Vermont) courtesy of TDI-NE
3. Lake Bomoseen, Fair Haven, Vermont courtesy of TDI-NE
4. TDI-NE 2014a

FINAL

**NEW ENGLAND CLEAN POWER LINK PROJECT
ENVIRONMENTAL IMPACT STATEMENT**

DOE/EIS-0503

VOLUME II: APPENDICES

**U.S. DEPARTMENT OF ENERGY
OFFICE OF ELECTRICITY DELIVERY
AND ENERGY RELIABILITY**



COOPERATING AGENCIES

**U.S. ENVIRONMENTAL PROTECTION AGENCY
U.S. ARMY CORPS OF ENGINEERS
U.S. COAST GUARD**

OCTOBER 2015

This Page Intentionally Left Blank

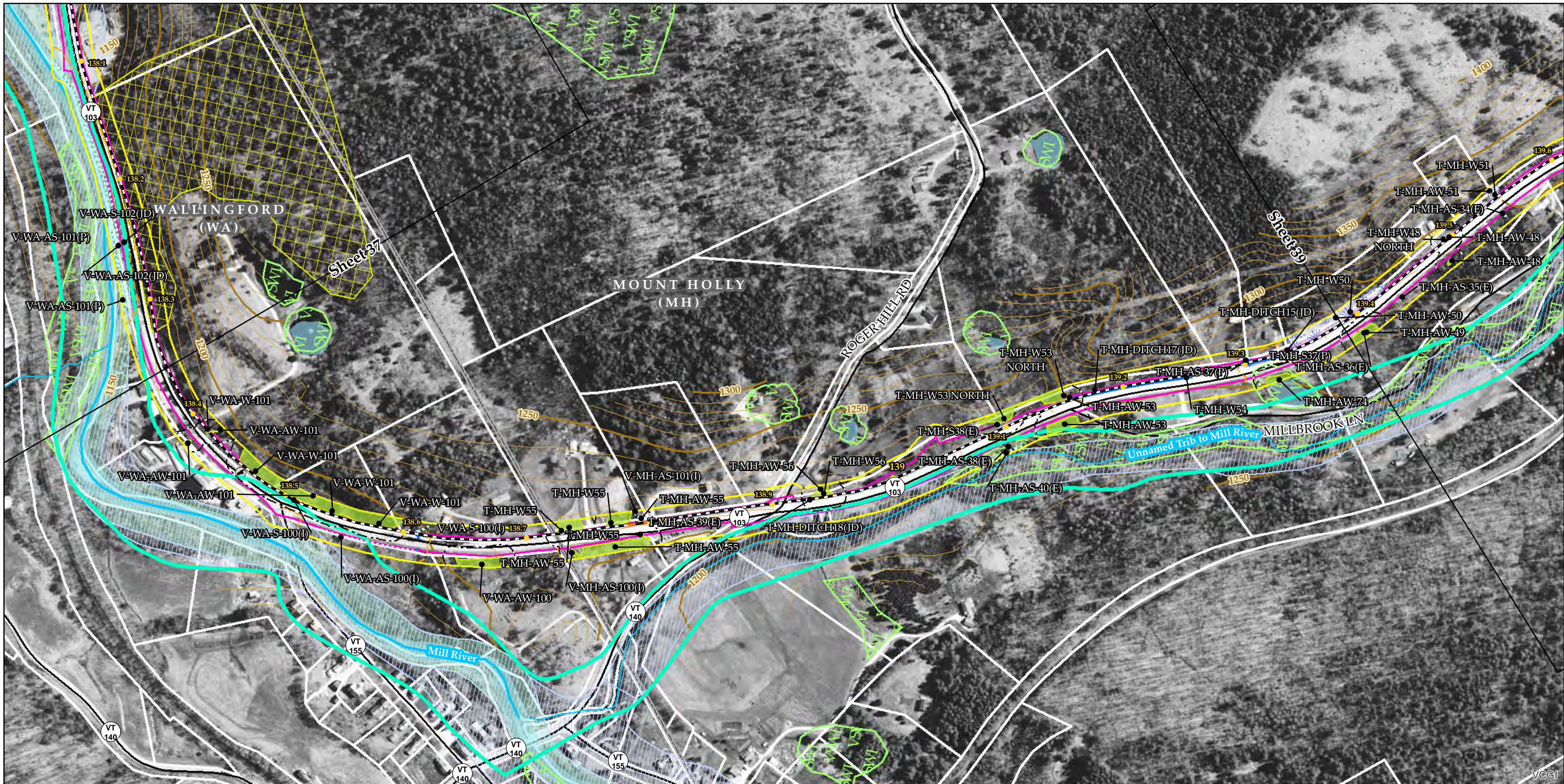
Table of Contents

Appendix A	Appendix A	Scoping Summary Report A-1
Appendix B	Appendix B	EIS Distribution List B-1
Appendix C	Appendix C	NECPL Project Transmission System Detailed Maps C-1
Appendix D	Appendix D	Alternatives Considered but Eliminated From Further Analysis D-1
Appendix E	Appendix E	CWA Section 404 and Section 10 Permit Application E-1
Appendix F	Appendix F	Vermont 248 Application Cover Letter F-1
Appendix G	Appendix G	TDI-NE General Mitigation Strategies G-1
Appendix H	Appendix H	ESA Section 7 Documentation H-1
Appendix I	Appendix I	NHPA Section 106 Documentation I-1
Appendix J	Appendix J	Environmental Justice Analysis Background J-1
Appendix K	Appendix K	Air Quality Analysis Background K-1
Appendix L	Appendix L	Contractor Disclosure Statement L-1
Appendix M	Appendix M	Comment Response Document M-1

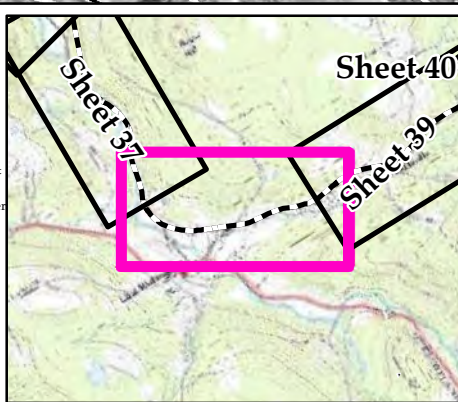

This Page Intentionally Left Blank

APPENDIX C NECPL PROJECT TRANSMISSION SYSTEM DETAILED MAPS

This Page Intentionally Left Blank



Sources: Background provided by VCGI (2007-2013); Provided by VCGI: Roads by VTrans (2012); NRCS Soils by NRCS (2008); Streams & Waterbodies by VHD (2010), VSWI Wetlands by ANR (2013), Deer Wintering Area by ANR (2013), County and Town Boundaries by VCGI (2012); Bear Crossing & Feeding Data by VT Fish & Wildlife (2001) Provided by TRC: Contours (2014), Conceptual Project Alignment (2014), VTrans ROW (2014), Parcel Boundaries (2009-2013) 100-year flood & Floodway compiled by TRC from FEMA (2014), Wetland & Stream Delineations by TRC & VHB (2014); Bat tree, Natural Community and RTE data assessments completed by Arrowwood Environmental (2014); River Corridors provided by VTDEC (2014).

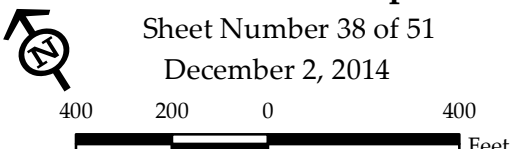


NECPL Proposed Overland Alignment (TRC)	Proposed Class II Wetland (TRC/VHB)	NHI Element Occurrence (VTFW)	Floodway (FEMA)
Horizontal Directional Drilling (HDD)	Proposed Class III Wetland (TRC/VHB)	RTEs	100 year floodplain (FEMA)
Jack and Bore	Proposed 50' Class II Wetland Buffer (VHB)	Significant Natural Community	River Corridor (VTDEC)
Terrestrial Cable (Trenching)	Approximate Stream (TRC/VHB)	Bear Crossing (VTFW)	Waterbody (VHD)
Project Parcel	Delineated Stream (TRC/VHB)	Bear Feeding (VTFW)	Town Boundary (VCGI)
Parcel Boundary	RTE Plants (AE)	Deer Wintering Area (ANR)	Country Boundary (VCGI)
Study Area	Natural Resource Buffer (VHB)	VSWI Wetland (ANR)	Road (VTrans)
Approximate Study Area	Potential Bat Tree (AE)	Named VHD Stream (VCGI)	50 Ft. Contour
Sheet Outline	Natural Community (AE)	Unnamed VHD Stream (VCGI)	10 Ft. Contour
	Uncommon (S3) Plants (AE)		
	Deer Wintering Area (AE)		

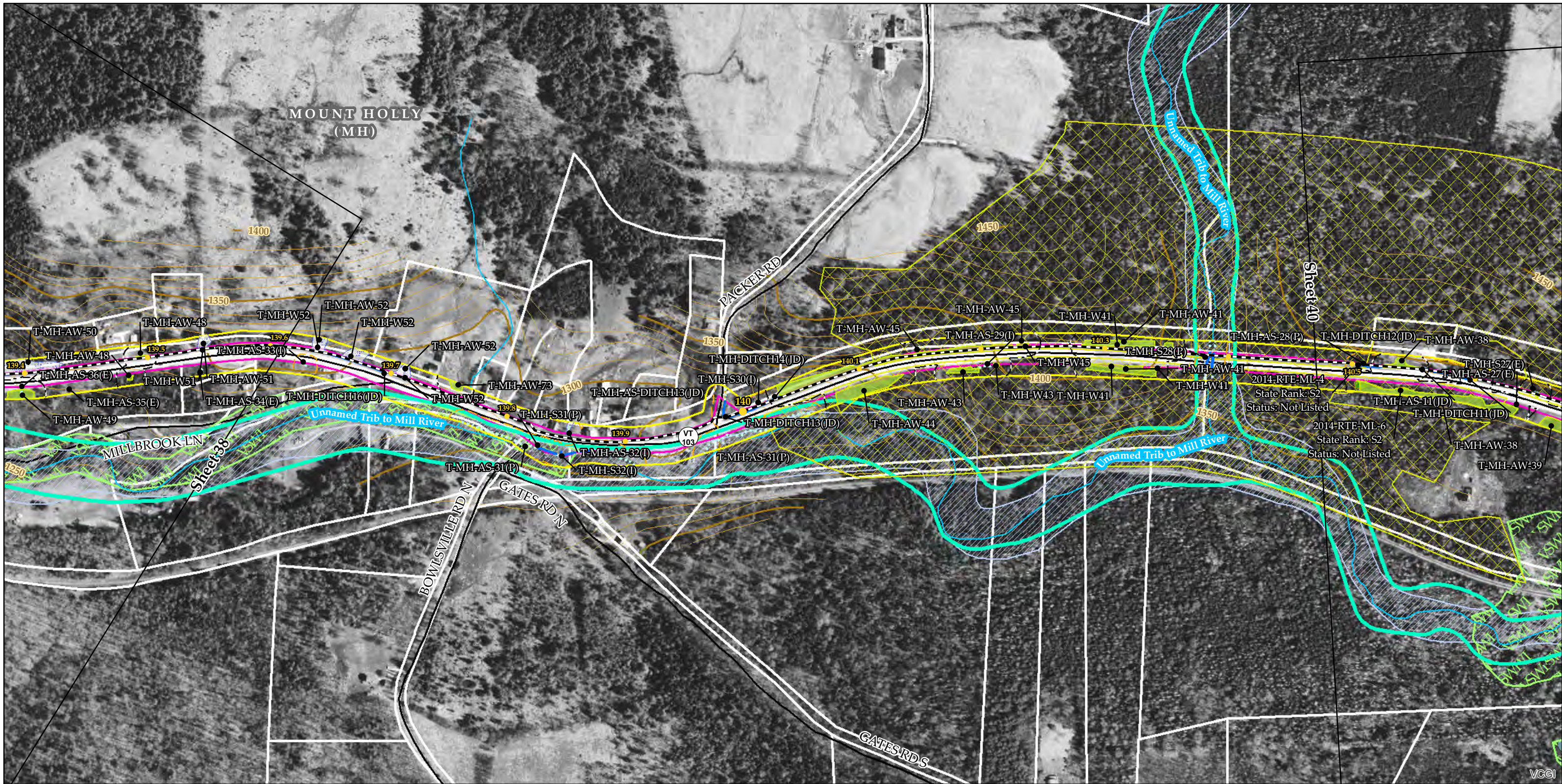
TDI - NECPL Project Overland Component Grand Isle, Rutland, & Windsor Counties, VT

Natural Resource Map Series

Sheet Number 38 of 51
December 2, 2014

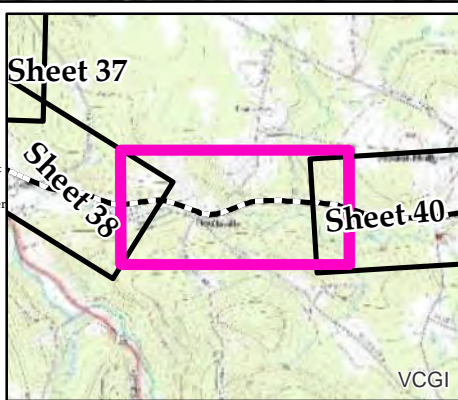


400 200 0 400 Feet



Sources: Background provided by VCGI (2007-2013); Provided by VCGI: Roads by VTrans (2012); NRCS Soils by NRCS (2008); Streams & Waterbodies by VHD (2010); VSWI Wetlands by ANR (2013); Deer Wintering Area by ANR (2013); County and Town Boundaries by VCGI (2012); Bear Crossing & Feeding Data by VT Fish & Wildlife (2001) Provided by TRC: Contours (2014), Conceptual Project Alignment (2014), VTrans ROW (2014), Parcel Boundaries (2009-2013) 100-year flood & Floodway compiled by TRC from FEMA (2014), Wetland & Stream Delineations by TRC & VHB (2014); Bat tree, Natural Community and RTE data assessments completed by Arrowwood Environmental (2014); River Corridors provided by VTDEC (2014).

vhb
TRC
Results you can rely on

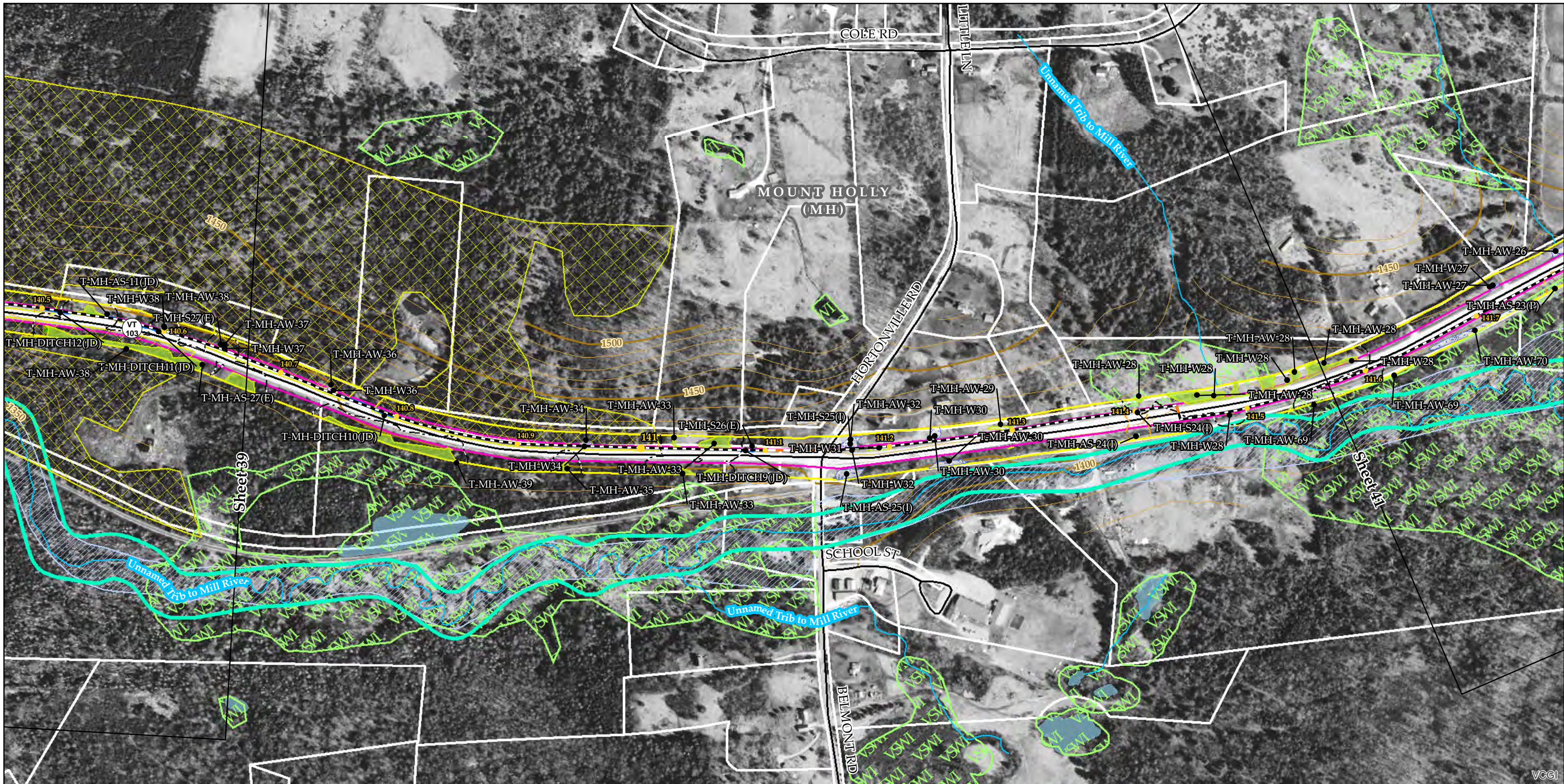


NECPL Proposed Overland Alignment (TRC)	Proposed Class II Wetland (TRC/VHB)	NHI Element Occurrence (VTFW)	Floodway (FEMA)
Horizontal Directional Drilling (HDD)	Proposed Class III Wetland (TRC/VHB)	RTEs	100 year floodplain (FEMA)
Jack and Bore	Proposed 50' Class II Wetland Buffer (VHB)	Significant Natural Community	River Corridor (VTDEC)
Terrestrial Cable (Trenching)	Approximate Stream (TRC/VHB)	Bear Crossing (VTFW)	Waterbody (VHD)
Project Parcel	Delineated Stream (TRC/VHB)	Bear Feeding (VTFW)	Town Boundary (VCGI)
Parcel Boundary	RTE Plants (AE)	Deer Wintering Area (ANR)	Country Boundary (VCGI)
Study Area	Natural Resource Buffer (VHB)	VSWI Wetland (ANR)	Road (VTrans)
Approximate Study Area	Potential Bat Tree (AE)	Named VHD Stream (VCGI)	50 Ft. Contour
Sheet Outline	Natural Community (AE)	Unnamed VHD Stream (VCGI)	10 Ft. Contour
	Uncommon (S3) Plants (AE)		
	Deer Wintering Area (AE)		

**TDI - NECPL Project
Overland Component
Grand Isle, Rutland, &
Windsor Counties, VT
Natural Resource Map Series**

Sheet Number 39 of 51
December 2, 2014

400 200 0 400
Feet



Sources: Background provided by VCGI (2007-2013); Provided by VCGI: Roads by VTrans (2012); NRCS Soils by NRCS (2008); Streams & Waterbodies by VHD (2010); VSWI Wetlands by ANR (2013); Deer Wintering Area by ANR (2013); County and Town Boundaries by VCGI (2012); Bear Crossing & Feeding Data by VT Fish & Wildlife (2001) Provided by TRC: Contours (2014); Conceptual Project Alignment (2014); VTrans ROW (2014); Parcel Boundaries (2009-2013) 100-year flood & Floodway compiled by TRC from FEMA (2014); Wetland & Stream Delineations by TRC & VHB (2014); Bat tree, Natural Community and RTE data assessments completed by Arrowwood Environmental (2014); River Corridors provided by VTDEC (2014).

Sheet 39

Sheet 41

VCGI

NECPL Proposed Overland Alignment (TRC)	Proposed Class II Wetland (TRC/VHB)	NHI Element Occurrence (VTFW)	Floodway (FEMA)
Horizontal Directional Drilling (HDD)	Proposed Class III Wetland (TRC/VHB)	RTEs	100 year floodplain (FEMA)
Jack and Bore	Proposed 50' Class II Wetland Buffer (VHB)	Significant Natural Community	River Corridor (VTDEC)
Terrestrial Cable (Trenching)	Approximate Stream (TRC/VHB)	Bear Crossing (VTFW)	Waterbody (VHD)
Project Parcel	Delineated Stream (TRC/VHB)	Bear Feeding (VTFW)	Town Boundary (VCGI)
Parcel Boundary	RTE Plants (AE)	Deer Wintering Area (ANR)	Country Boundary (VCGI)
Study Area	Natural Resource Buffer (VHB)	VSWI Wetland (ANR)	Road (VTrans)
Approximate Study Area	Potential Bat Tree (AE)	Named VHD Stream (VCGI)	50 Ft. Contour
Sheet Outline	Natural Community (AE)	Unnamed VHD Stream (VCGI)	10 Ft. Contour
	Uncommon (S3) Plants (AE)		
	Deer Wintering Area (AE)		

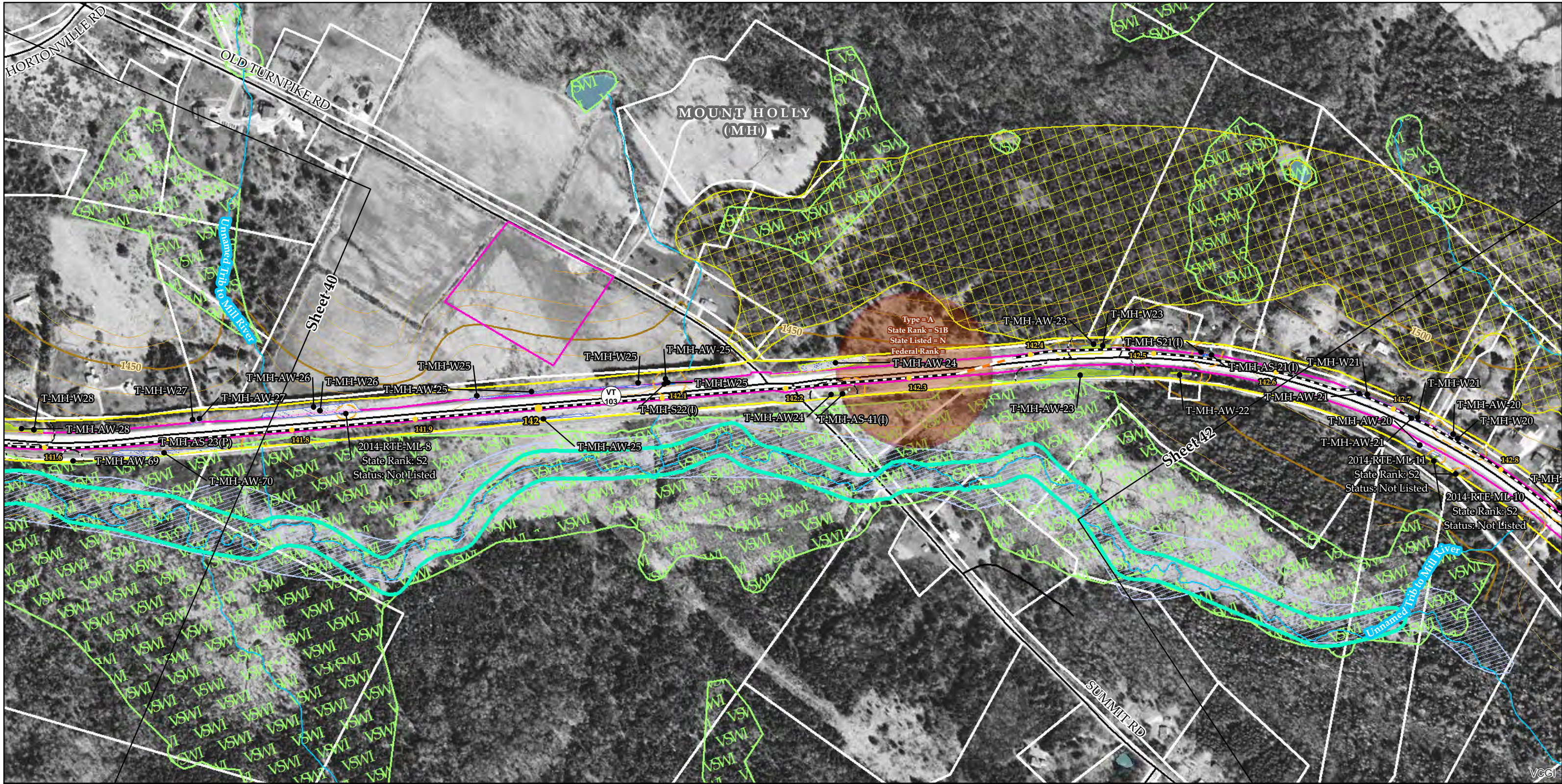
TDI - NECPL Project Overland Component

Grand Isle, Rutland, & Windsor Counties, VT

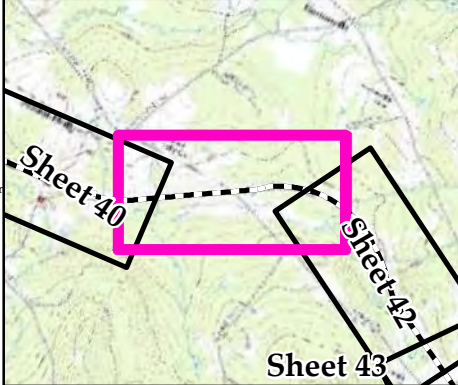
Natural Resource Map Series

Sheet Number 40 of 51

December 2, 2014



Sources: Background provided by VCGI (2007-2013); Provided by VCGI: Roads by VTrans (2012); NRCS Soils by NRCS (2008); Streams & Waterbodies by VHD (2010); VSWI Wetlands by ANR (2013); Deer Wintering Area by ANR (2013); County and Town Boundaries by VCGI (2012); Bear Crossing & Feeding Data by VT Fish & Wildlife (2001) Provided by TRC: Contours (2014); Conceptual Project Alignment (2014); VTrans ROW (2014); Parcel Boundaries (2009-2013) 100-year flood & Floodway compiled by TRC from FEMA (2014); Wetland & Stream Delineations by TRC & VHB (2014); Bat tree, Natural Community and RTE data assessments completed by Arrowwood Environmental (2014); River Corridors provided by VTDEC (2014).



- NECPL Proposed Overland Alignment (TRC)
- Horizontal Directional Drilling (HDD)
 - Jack and Bore
 - Terrestrial Cable (Trenching)
 - Project Parcel
 - Parcel Boundary
 - Study Area
 - Approximate Study Area
 - Sheet Outline

- Proposed Class II Wetland (TRC/VHB)
- Proposed Class III Wetland (TRC/VHB)
 - Proposed 50' Class II Wetland Buffer (VHB)
 - Approximate Stream (TRC/VHB)
 - Delineated Stream (TRC/VHB)
 - RTE Plants (AE)
 - Natural Resource Buffer (VHB)
 - Potential Bat Tree (AE)
 - Natural Community (AE)
 - Uncommon (S3) Plants (AE)
 - Deer Wintering Area (AE)

- NHI Element Occurrence (VTFW)
- RTEs
 - Significant Natural Community
 - Bear Crossing (VTFW)
 - Bear Feeding (VTFW)
 - Deer Wintering Area (ANR)
 - VSWI Wetland (ANR)
 - Named VHD Stream (VCGI)
 - Unnamed VHD Stream (VCGI)

- Floodway (FEMA)
- 100 year floodplain (FEMA)
 - River Corridor (VTDEC)
 - Waterbody (VHD)
 - Town Boundary (VCGI)
 - Country Boundary (VCGI)
 - Road (VTrans)
 - 50 Ft. Contour
 - 10 Ft. Contour

**TDI - NECPL Project
Overland Component
Grand Isle, Rutland, &
Windsor Counties, VT
Natural Resource Map Series**

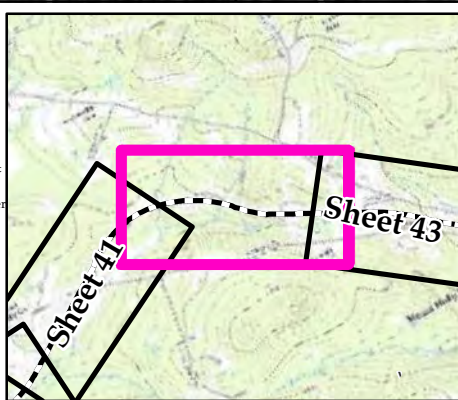
Sheet Number 41 of 51
December 2, 2014

400 200 0 400
Feet



Sources: Background provided by VCGI (2007-2013); Provided by VCGI: Roads by VTrans (2012); NRCS Soils by NRCS (2008); Streams & Waterbodies by VHD (2010), VSWI Wetlands by ANR (2013), Deer Wintering Area by ANR (2013), County and Town Boundaries by VCGI (2012); Bear Crossing & Feeding Data by VT Fish & Wildlife (2001) Provided by TRC: Contours (2014), Conceptual Project Alignment (2014), VTrans ROW (2014), Parcel Boundaries (2009-2013) 100-year flood & Floodway compiled by TRC from FEMA (2014), Wetland & Stream Delineations by TRC & VHB (2014); Bat tree, Natural Community and RTE data assessments completed by Arrowwood Environmental (2014); River Corridors provided by VTDEC (2014).

vhb
TRC
Results you can rely on

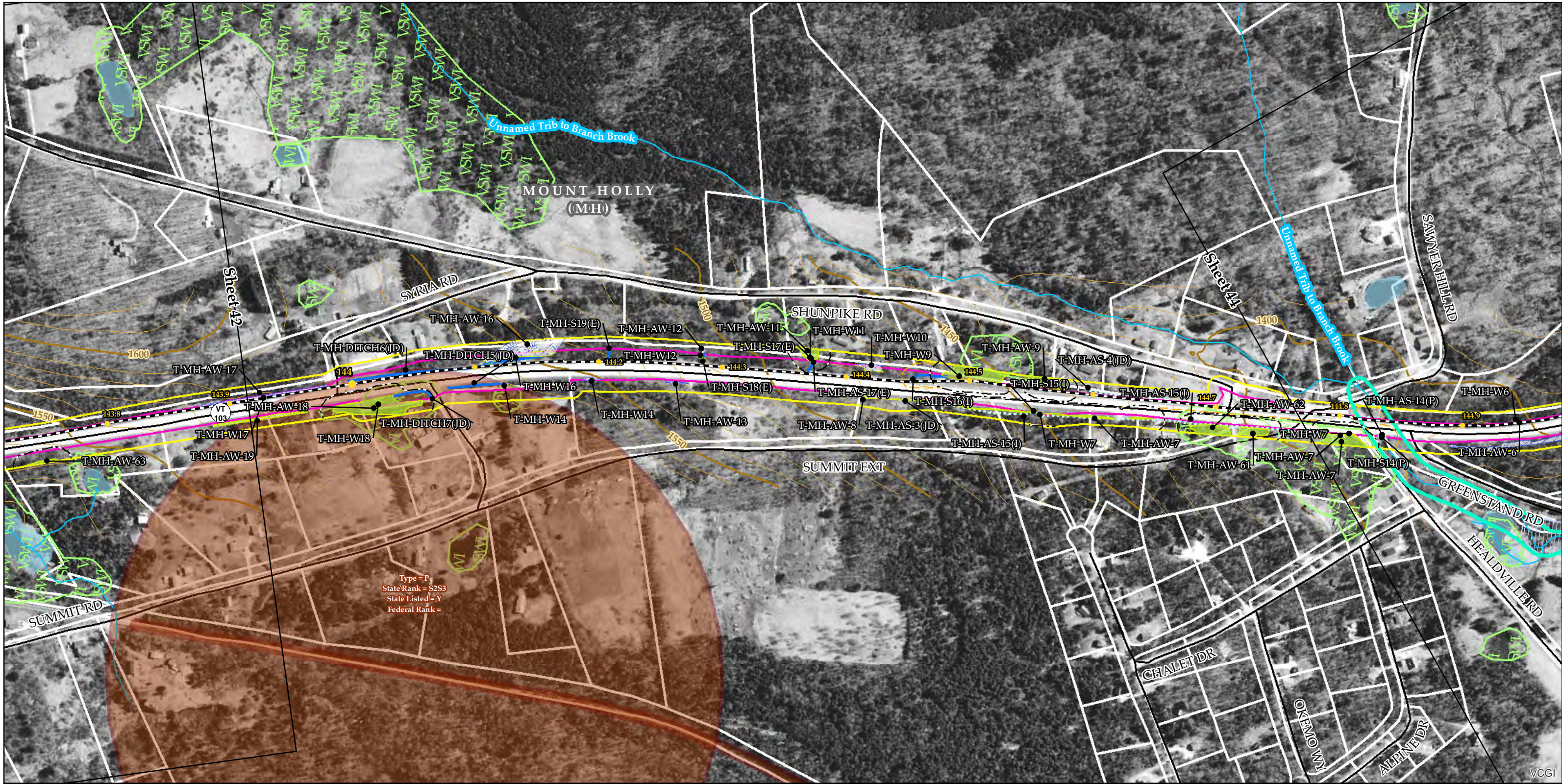


NECPL Proposed Overland Alignment (TRC)	Proposed Class II Wetland (TRC/VHB)	NHI Element Occurrence (VTFW)	Floodway (FEMA)
Horizontal Directional Drilling (HDD)	Proposed Class III Wetland (TRC/VHB)	RTEs	100 year floodplain (FEMA)
Jack and Bore	Proposed 50' Class II Wetland Buffer (VHB)	Significant Natural Community	River Corridor (VTDEC)
Terrestrial Cable (Trenching)	Approximate Stream (TRC/VHB)	Bear Crossing (VTFW)	Waterbody (VHD)
Project Parcel	Delineated Stream (TRC/VHB)	Bear Feeding (VTFW)	Town Boundary (VCGI)
Parcel Boundary	RTE Plants (AE)	Deer Wintering Area (ANR)	Country Boundary (VCGI)
Study Area	Natural Resource Buffer (VHB)	VSWI Wetland (ANR)	Road (VTrans)
Approximate Study Area	Potential Bat Tree (AE)	Named VHD Stream (VCGI)	50 Ft. Contour
Sheet Outline	Natural Community (AE)	Unnamed VHD Stream (VCGI)	10 Ft. Contour
	Uncommon (S3) Plants (AE)		
	Deer Wintering Area (AE)		

**TDI - NECPL Project
Overland Component
Grand Isle, Rutland, &
Windsor Counties, VT
Natural Resource Map Series**

Sheet Number 42 of 51
December 2, 2014

400 200 0 400
Feet



Sources: Background provided by VCGI (2007-2013); Provided by VCGI: Roads by VTrans (2012); NRCS Soils by NRCS (2008); Streams & Waterbodies by VHD (2010); VSWI Wetlands by ANR (2013); Deer Wintering Area by ANR (2013); County and Town Boundaries by VCGI (2012); Bear Crossing & Feeding Data by VT Fish & Wildlife (2001) Provided by TRC: Contours (2014); Conceptual Project Alignment (2014); VTrans ROW (2014); Parcel Boundaries (2009-2013) 100-year flood & Floodway compiled by TRC from FEMA (2014); Wetland & Stream Delineations by TRC & VHB (2014); Bat tree, Natural Community and RTE data assessments completed by Arrowwood Environmental (2014); River Corridors provided by VTDEC (2014).

NECPL Proposed Overland Alignment (TRC)	Proposed Class II Wetland (TRC/VHB)	NHI Element Occurrence (VTFW)	Floodway (FEMA)
Horizontal Directional Drilling (HDD)	Proposed Class III Wetland (TRC/VHB)	RTEs	100 year floodplain (FEMA)
Jack and Bore	Proposed 50' Class II Wetland Buffer (VHB)	Significant Natural Community	River Corridor (VTDEC)
Terrestrial Cable (Trenching)	Approximate Stream (TRC/VHB)	Bear Crossing (VTFW)	Waterbody (VHD)
Project Parcel	Delineated Stream (TRC/VHB)	Bear Feeding (VTFW)	Town Boundary (VCGI)
Parcel Boundary	RTE Plants (AE)	Deer Wintering Area (ANR)	Country Boundary (VCGI)
Study Area	Natural Resource Buffer (VHB)	VSWI Wetland (ANR)	Road (VTrans)
Approximate Study Area	Potential Bat Tree (AE)	Named VHD Stream (VCGI)	50 Ft. Contour
Sheet Outline	Natural Community (AE)	Unnamed VHD Stream (VCGI)	10 Ft. Contour
	Uncommon (S3) Plants (AE)		
	Deer Wintering Area (AE)		

TDI - NECPL Project Overland Component

Grand Isle, Rutland, & Windsor Counties, VT



Natural Resource Map Series

Sheet Number 43 of 51

December 2, 2014



Sources: Background provided by VCGI (2007-2013); Provided by VCGI: Roads by VTrans (2012); NRCS Soils by NRCS (2008); Streams & Waterbodies by VHD (2010); VSWI Wetlands by ANR (2013); Deer Wintering Area by ANR (2013); County and Town Boundaries by VCGI (2012); Bear Crossing & Feeding Data by VT Fish & Wildlife (2001) Provided by TRC: Contours (2014), Conceptual Project Alignment (2014), VTrans ROW (2014), Parcel Boundaries (2009-2013) 100-year flood & Floodway compiled by TRC from FEMA (2014), Wetland & Stream Delineations by TRC & VHB (2014); Bat tree, Natural Community and RTE data assessments completed by Arrowwood Environmental (2014); River Corridors provided by VTDEC (2014).





NECPL Proposed Overland Alignment (TRC)

- Horizontal Directional Drilling (HDD)
- Jack and Bore
- Terrestrial Cable (Trenching)
- Project Parcel
- Parcel Boundary
- Study Area
- Approximate Study Area
- Sheet Outline

Proposed Class II Wetland (TRC/VHB)

- Proposed Class III Wetland (TRC/VHB)
- Proposed 50' Class II Wetland Buffer (VHB)
- Approximate Stream (TRC/VHB)
- Delineated Stream (TRC/VHB)
- RTE Plants (AE)
- Natural Resource Buffer (VHB)
- Potential Bat Tree (AE)
- Natural Community (AE)
- Uncommon (S3) Plants (AE)
- Deer Wintering Area (AE)



NHI Element Occurrence (VTFW)

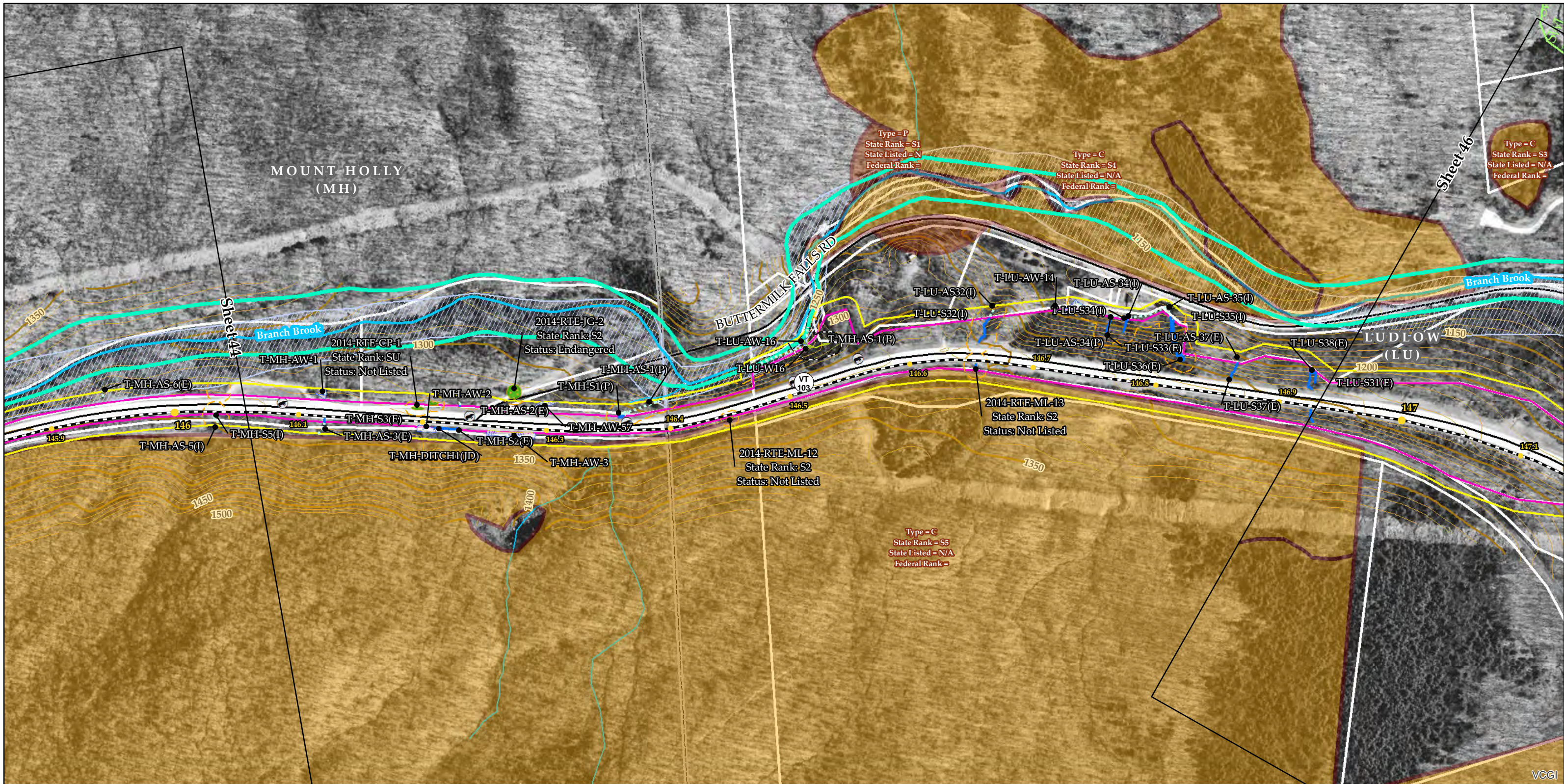
- RTEs
- Significant Natural Community
- Bear Crossing (VTFW)
- Bear Feeding (VTFW)
- Deer Wintering Area (ANR)
- VSWI Wetland (ANR)
- Named VHD Stream (VCGI)
- Unnamed VHD Stream (VCGI)

Floodway (FEMA)

- 100 year floodplain (FEMA)
- River Corridor (VTDEC)
- Waterbody (VHD)
- Town Boundary (VCGI)
- Country Boundary (VCGI)
- Road (VTrans)
- 50 Ft. Contour
- 10 Ft. Contour

TDI - NECPL Project Overland Component
Grand Isle, Rutland, & Windsor Counties, VT
Natural Resource Map Series
Sheet Number 44 of 51
December 2, 2014





Sources: Background provided by VCGI (2007-2013); Provided by VCGI: Roads by VTrans (2012); NRCS Soils by NRCS (2008); Streams & Waterbodies by VHD (2010); VSWI Wetlands by ANR (2013); Deer Wintering Area by ANR (2013); County and Town Boundaries by VCGI (2012); Bear Crossing & Feeding Data by VT Fish & Wildlife (2001) Provided by TRC: Contours (2014), Conceptual Project Alignment (2014), VTrans ROW (2014), Parcel Boundaries (2009-2013) 100-year flood & Floodway compiled by TRC from FEMA (2014), Wetland & Stream Delineations by TRC & VHB (2014); Bat tree, Natural Community and RTE data assessments completed by Arrowwood Environmental (2014); River Corridors provided by VTDEC (2014).

NECPL Proposed Overland Alignment (TRC)	Proposed Class II Wetland (TRC/VHB)	NHI Element Occurrence (VTFW)	Floodway (FEMA)
Horizontal Directional Drilling (HDD)	Proposed Class III Wetland (TRC/VHB)	RTEs	100 year floodplain (FEMA)
Jack and Bore	Proposed 50' Class II Wetland Buffer (VHB)	Significant Natural Community	River Corridor (VTDEC)
Terrestrial Cable (Trenching)	Approximate Stream (TRC/VHB)	Bear Crossing (VTFW)	Waterbody (VHD)
Project Parcel	Delineated Stream (TRC/VHB)	Bear Feeding (VTFW)	Town Boundary (VCGI)
Parcel Boundary	RTE Plants (AE)	Deer Wintering Area (ANR)	Country Boundary (VCGI)
Study Area	Natural Resource Buffer (VHB)	VSWI Wetland (ANR)	Road (VTrans)
Approximate Study Area	Potential Bat Tree (AE)	Named VHD Stream (VCGI)	50 Ft. Contour
Sheet Outline	Natural Community (AE)	Unnamed VHD Stream (VCGI)	10 Ft. Contour
	Uncommon (S3) Plants (AE)		
	Deer Wintering Area (AE)		

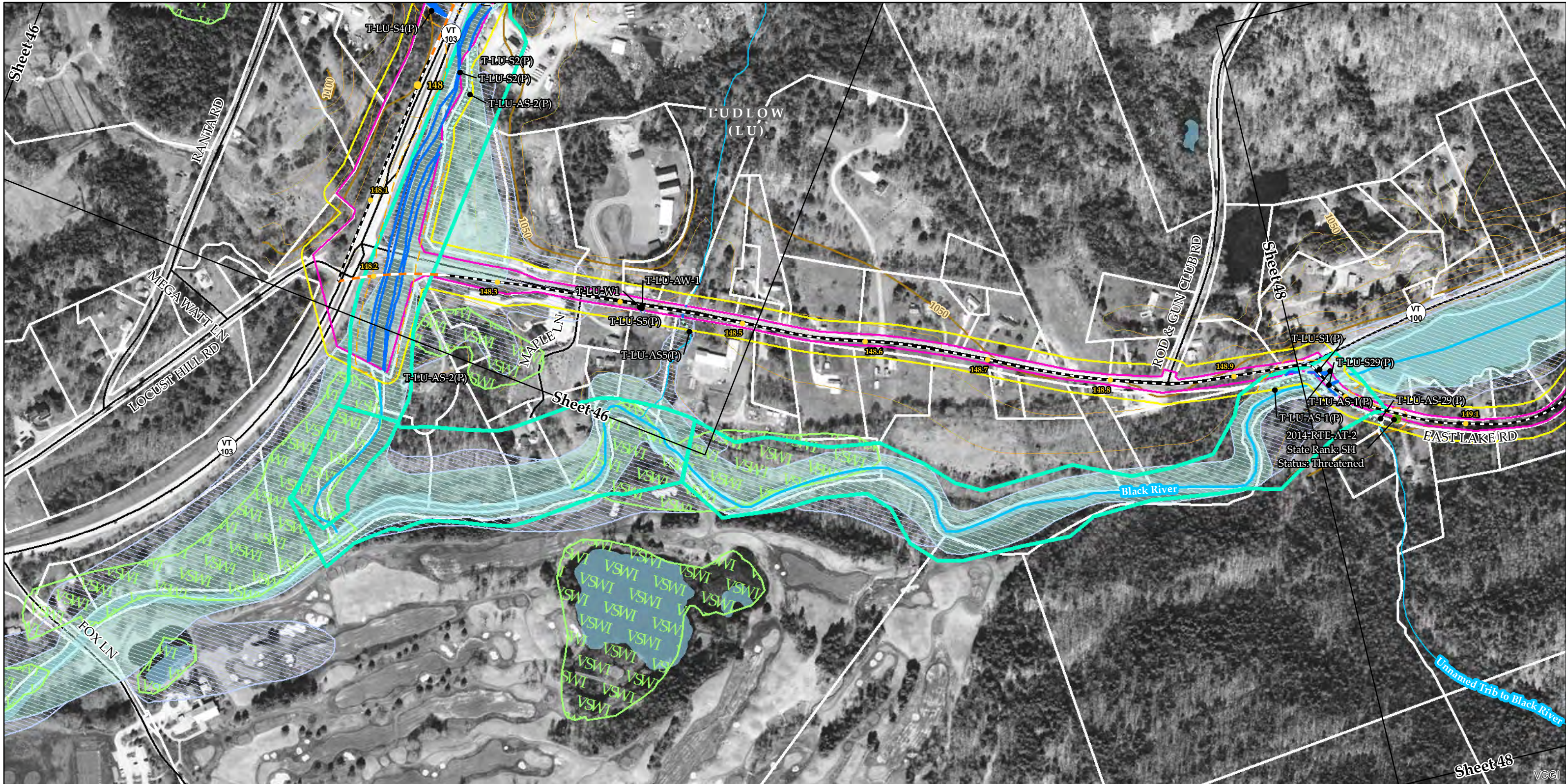
TDI - NECPL Project Overland Component

Grand Isle, Rutland, & Windsor Counties, VT

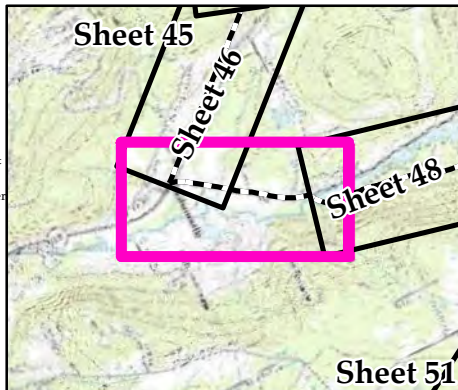
Natural Resource Map Series

Sheet Number 45 of 51

December 2, 2014



Sources: Background provided by VCGI (2007-2013); Provided by VCGI: Roads by VTrans (2012); NRCS Soils by NRCS (2008); Streams & Waterbodies by VHD (2010); VSWI Wetlands by ANR (2013); Deer Wintering Area by ANR (2013); County and Town Boundaries by VCGI (2012); Bear Crossing & Feeding Data by VT Fish & Wildlife (2001) Provided by TRC: Contours (2014), Conceptual Project Alignment (2014), VTrans ROW (2014), Parcel Boundaries (2009-2013) 100-year flood & Floodway compiled by TRC from FEMA (2014), Wetland & Stream Delineations by TRC & VHB (2014); Bat tree, Natural Community and RTE data assessments completed by Arrowwood Environmental (2014); River Corridors provided by VTDEC (2014).



- NECPL Proposed Overland Alignment (TRC)
- Horizontal Directional Drilling (HDD)
 - Jack and Bore
 - Terrestrial Cable (Trenching)
 - Project Parcel
 - Parcel Boundary
 - Study Area
 - Approximate Study Area
 - Sheet Outline

- Proposed Class II Wetland (TRC/VHB)
- Proposed Class III Wetland (TRC/VHB)
- Proposed 50' Class II Wetland Buffer (VHB)
- Approximate Stream (TRC/VHB)
- Delineated Stream (TRC/VHB)
- RTE Plants (AE)
- Natural Resource Buffer (VHB)
- Potential Bat Tree (AE)
- Natural Community (AE)
- Uncommon (S3) Plants (AE)
- Deer Wintering Area (AE)

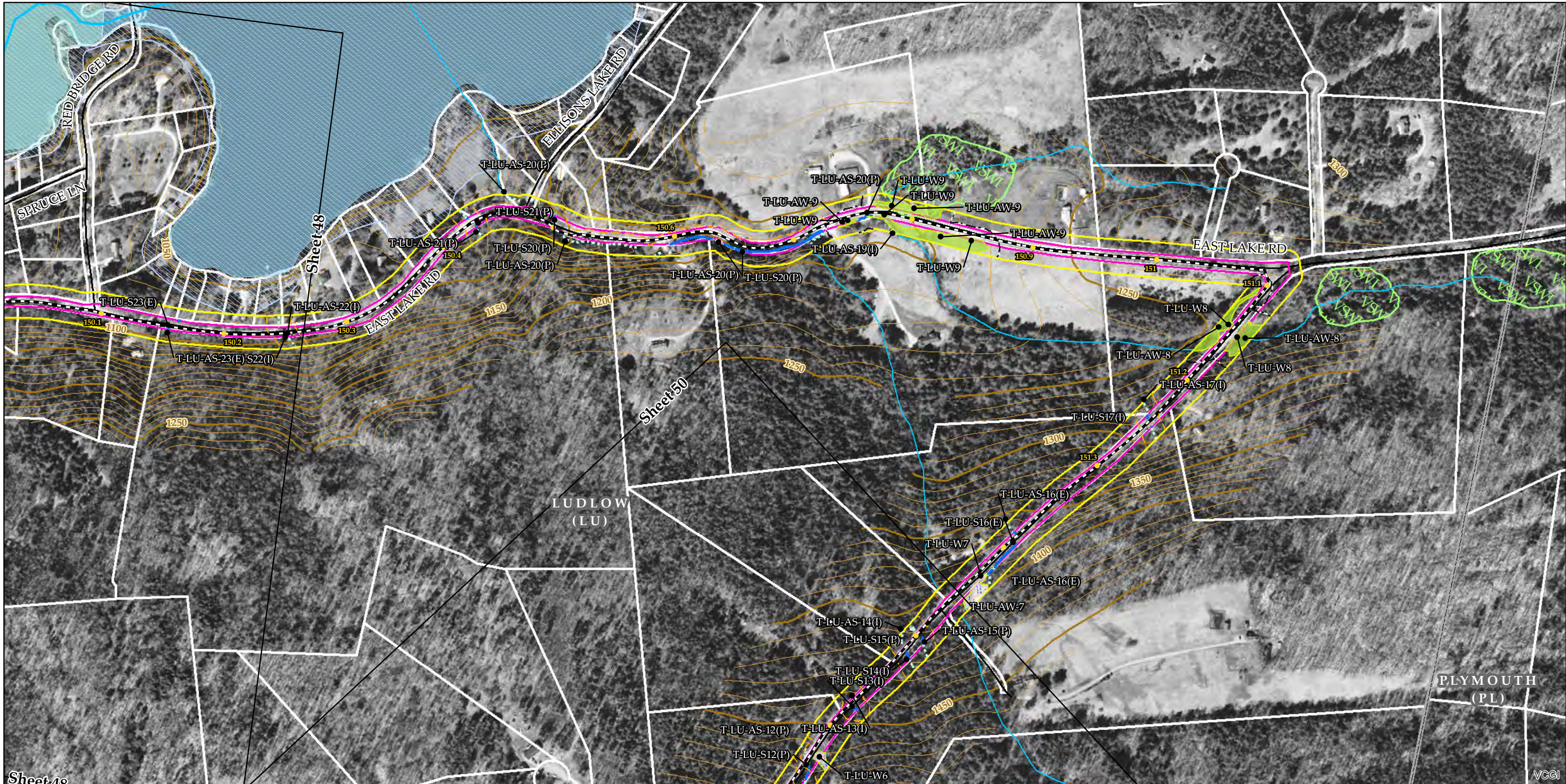
- NHI Element Occurrence (VTFW)
- RTEs
 - Significant Natural Community
 - Bear Crossing (VTFW)
 - Bear Feeding (VTFW)
 - Deer Wintering Area (ANR)
 - VSWI Wetland (ANR)
 - Named VHD Stream (VCGI)
 - Unnamed VHD Stream (VCGI)

- Floodway (FEMA)
- 100 year floodplain (FEMA)
- River Corridor (VTDEC)
- Waterbody (VHD)
- Town Boundary (VCGI)
- Country Boundary (VCGI)
- Road (VTrans)
- 50 Ft. Contour
- 10 Ft. Contour

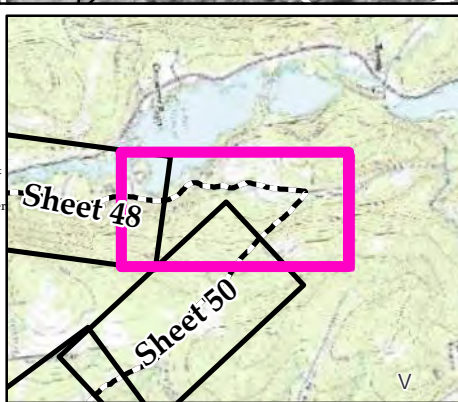


**TDI - NECPL Project
Overland Component
Grand Isle, Rutland, &
Windsor Counties, VT
Natural Resource Map Series**

Sheet Number 47 of 51
December 2, 2014

400 200 0 400
Feet



Sources: Background provided by VCGI (2007-2013); Provided by VCGI: Roads by VTrans (2012); NRCS Soils by NRCS (2008); Streams & Waterbodies by VHD (2010), VSWI Wetlands by ANR (2013), Deer Wintering Area by ANR (2013), County and Town Boundaries by VCGI (2012); Bear Crossing & Feeding Data by VT Fish & Wildlife (2001) Provided by TRC: Contours (2014), Conceptual Project Alignment (2014), VTrans ROW (2014), Parcel Boundaries (2009-2013) 100-year flood & Floodway compiled by TRC from FEMA (2014), Wetland & Stream Delineations by TRC & VHB (2014); Bat tree, Natural Community and RTE data assessments completed by Arrowwood Environmental (2014); River Corridors provided by VTDEC (2014).



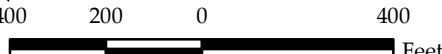
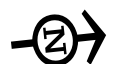
NECPL Proposed Overland Alignment (TRC)	Proposed Class II Wetland (TRC/VHB)	NHI Element Occurrence (VTFW)	Floodway (FEMA)
Horizontal Directional Drilling (HDD)	Proposed Class III Wetland (TRC/VHB)	RTEs	100 year floodplain (FEMA)
Jack and Bore	Proposed 50' Class II Wetland Buffer (VHB)	Significant Natural Community	River Corridor (VTDEC)
Terrestrial Cable (Trenching)	Approximate Stream (TRC/VHB)	Bear Crossing (VTFW)	Waterbody (VHD)
Project Parcel	Delineated Stream (TRC/VHB)	Bear Feeding (VTFW)	Town Boundary (VCGI)
Parcel Boundary	RTE Plants (AE)	Deer Wintering Area (ANR)	Country Boundary (VCGI)
Study Area	Natural Resource Buffer (VHB)	VSWI Wetland (ANR)	Road (VTrans)
Approximate Study Area	Potential Bat Tree (AE)	Named VHD Stream (VCGI)	50 Ft. Contour
Sheet Outline	Natural Community (AE)	Unnamed VHD Stream (VCGI)	10 Ft. Contour
	Uncommon (S3) Plants (AE)		
	Deer Wintering Area (AE)		

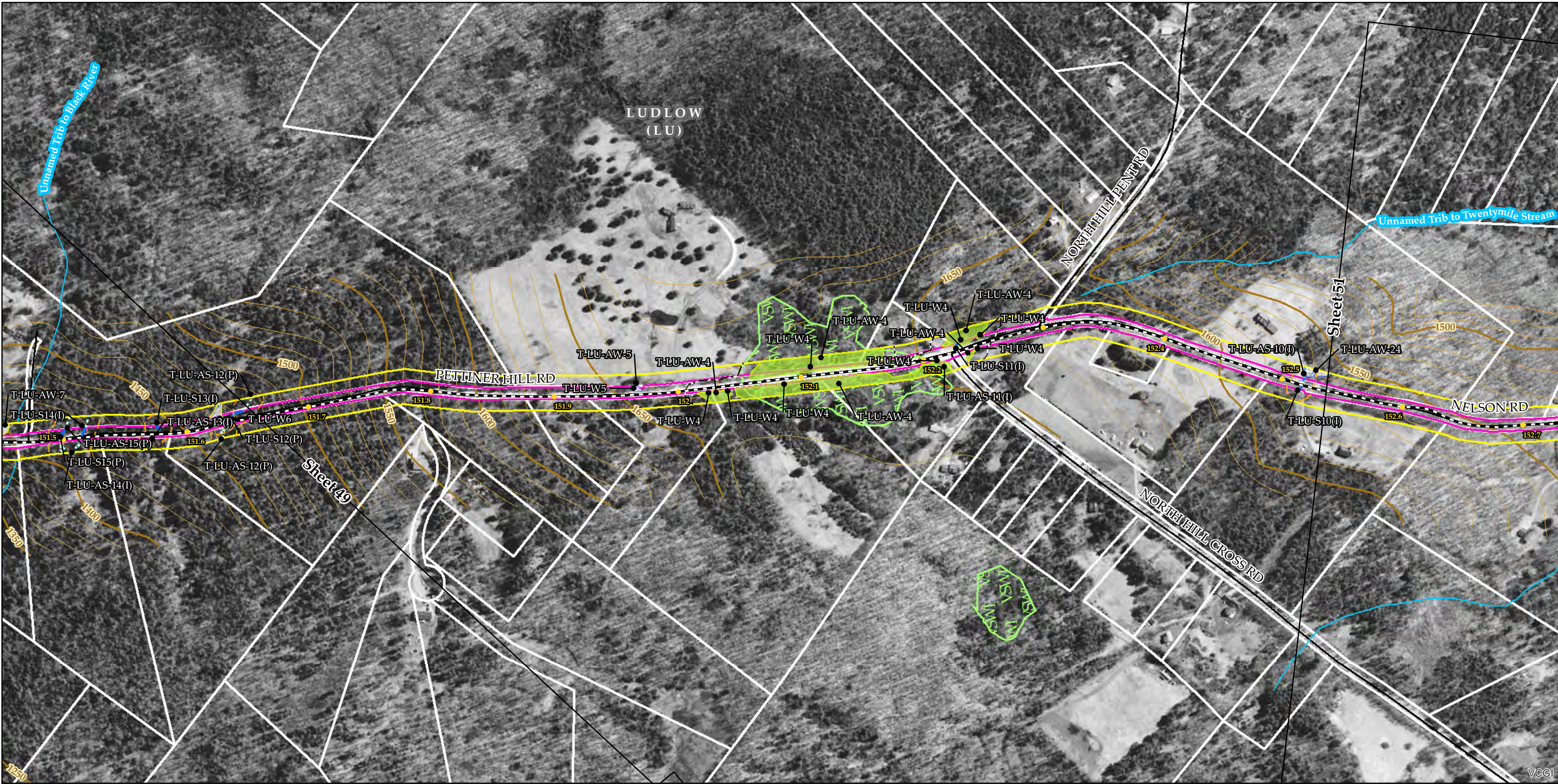
TDI - NECPL Project Overland Component Grand Isle, Rutland, & Windsor Counties, VT

Natural Resource Map Series



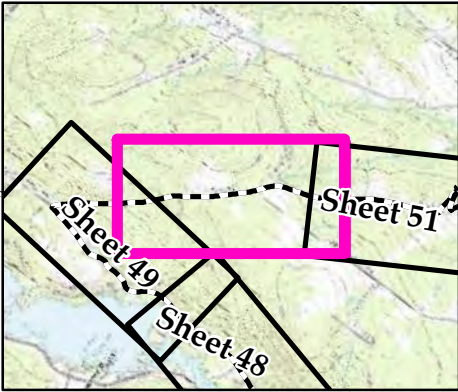
Sheet Number 49 of 51

December 2, 2014





Sources: Background provided by VCGI (2007-2013); Provided by VCGI: Roads by VTrans (2012); NRCS Soils by NRCS (2008); Streams & Waterbodies by VHD (2010); VSWI Wetlands by ANR (2013); Deer Wintering Area by ANR (2013); County and Town Boundaries by VCGI (2012); Bear Crossing & Feeding Data by VT Fish & Wildlife (2001) Provided by TRC: Contours (2014); Conceptual Project Alignment (2014); VTrans ROW (2014); Parcel Boundaries (2009-2013) 100-year flood & Floodway compiled by TRC from FEMA (2014); Wetland & Stream Delineations by TRC & VHB (2014); Bat tree, Natural Community and RTE data assessments completed by Arrowwood Environmental (2014); River Corridors provided by VTDEC (2014).

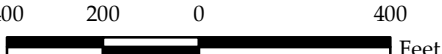



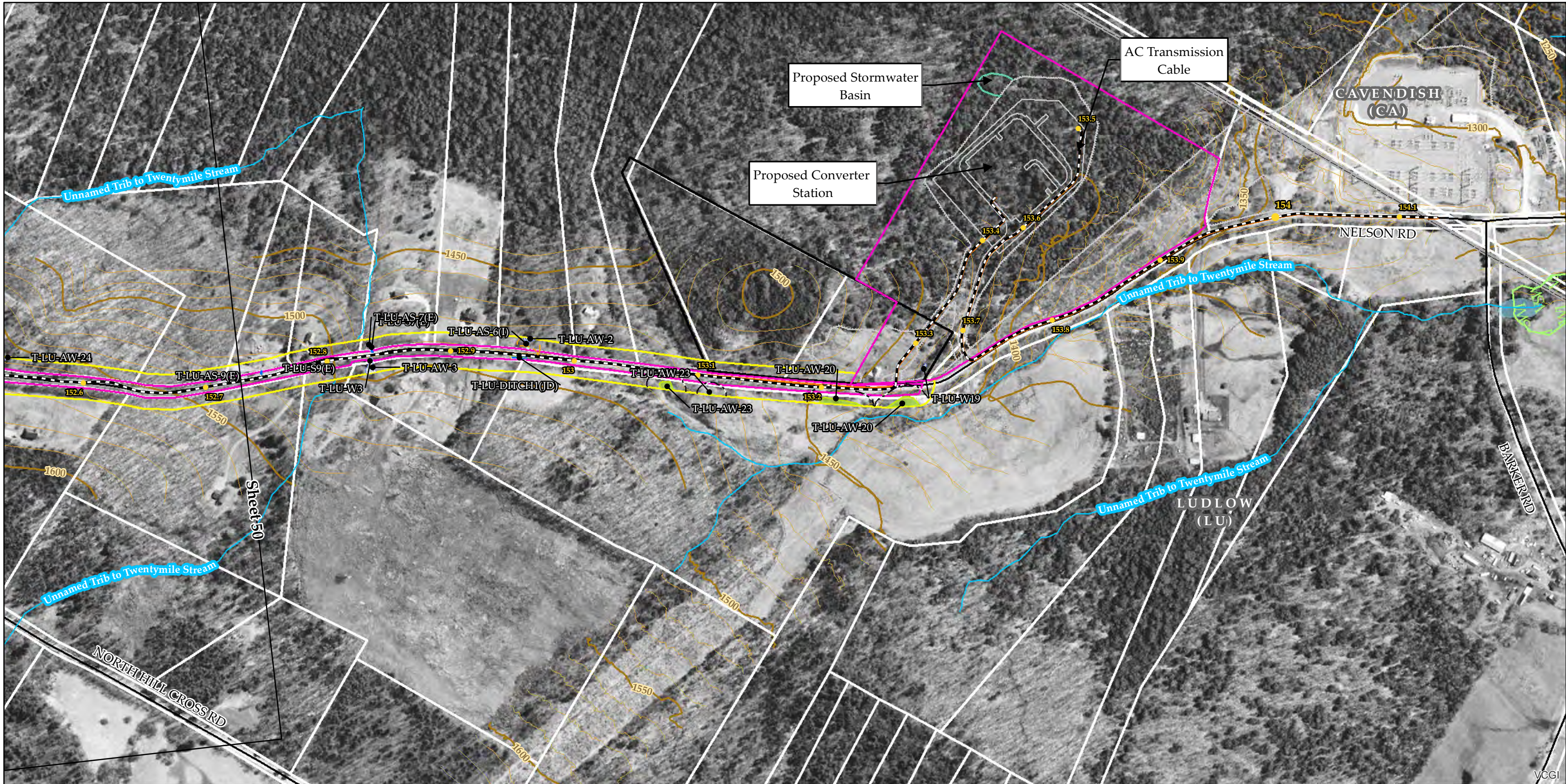
NECPL Proposed Overland Alignment (TRC)	Proposed Class II Wetland (TRC/VHB)	NHI Element Occurrence (VTFW)	Floodway (FEMA)
Horizontal Directional Drilling (HDD)	Proposed Class III Wetland (TRC/VHB)	RTEs	100 year floodplain (FEMA)
Jack and Bore	Proposed 50' Class II Wetland Buffer (VHB)	Significant Natural Community	River Corridor (VTDEC)
Terrestrial Cable (Trenching)	Approximate Stream (TRC/VHB)	Bear Crossing (VTFW)	Waterbody (VHD)
Project Parcel	Delineated Stream (TRC/VHB)	Bear Feeding (VTFW)	Town Boundary (VCGI)
Parcel Boundary	RTE Plants (AE)	Deer Wintering Area (ANR)	Country Boundary (VCGI)
Study Area	Natural Resource Buffer (VHB)	VSWI Wetland (ANR)	Road (VTrans)
Approximate Study Area	Potential Bat Tree (AE)	Named VHD Stream (VCGI)	50 Ft. Contour
Sheet Outline	Natural Community (AE)	Unnamed VHD Stream (VCGI)	10 Ft. Contour
	Uncommon (S3) Plants (AE)		
	Deer Wintering Area (AE)		

TDI - NECPL Project Overland Component Grand Isle, Rutland, & Windsor Counties, VT

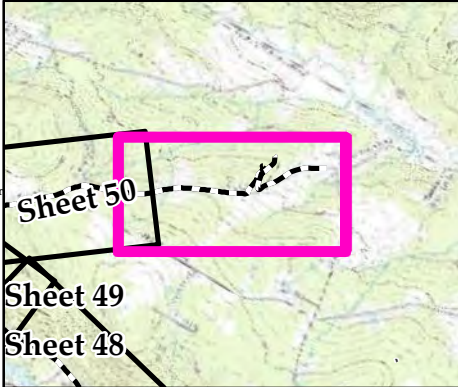
Natural Resource Map Series

Sheet Number 50 of 51
December 2, 2014





Sources: Background provided by VCGI (2007-2013); Provided by VCGI: Roads by VTrans (2012); NRCS Soils by NRCS (2008); Streams & Waterbodies by VHD (2010), VSWI Wetlands by ANR (2013), Deer Wintering Area by ANR (2013), County and Town Boundaries by VCGI (2012); Bear Crossing & Feeding Data by VT Fish & Wildlife (2001) Provided by TRC: Contours (2014), Conceptual Project Alignment (2014), VTrans ROW (2014), Parcel Boundaries (2009-2013) 100-year flood & Floodway compiled by TRC from FEMA (2014), Wetland & Stream Delineations by TRC & VHB (2014); Bat tree, Natural Community and RTE data assessments completed by Arrowwood Environmental (2014); River Corridors provided by VTDEC (2014).



- NECPL Proposed Overland Alignment (TRC)
- Horizontal Directional Drilling (HDD)
 - Jack and Bore
 - Terrestrial Cable (Trenching)
 - Project Parcel
 - Parcel Boundary
 - Study Area
 - Approximate Study Area
 - Sheet Outline

- Proposed Class II Wetland (TRC/VHB)
- Proposed Class III Wetland (TRC/VHB)
- Proposed 50' Class II Wetland Buffer (VHB)
- Approximate Stream (TRC/VHB)
- Delineated Stream (TRC/VHB)
- RTE Plants (AE)
- Natural Resource Buffer (VHB)
- Potential Bat Tree (AE)
- Natural Community (AE)
- Uncommon (S3) Plants (AE)
- Deer Wintering Area (AE)

- NHI Element Occurrence (VTFW)
- RTEs
 - Significant Natural Community
 - Bear Crossing (VTFW)
 - Bear Feeding (VTFW)
 - Deer Wintering Area (ANR)
 - VSWI Wetland (ANR)
 - Named VHD Stream (VCGI)
 - Unnamed VHD Stream (VCGI)

- Floodway (FEMA)
- 100 year floodplain (FEMA)
- River Corridor (VTDEC)
- Waterbody (VHD)
- Town Boundary (VCGI)
- Country Boundary (VCGI)
- Road (VTrans)
- 50 Ft. Contour
- 10 Ft. Contour

**TDI - NECPL Project
Overland Component
Grand Isle, Rutland, &
Windsor Counties, VT
Natural Resource Map Series**

Sheet Number 51 of 51
December 2, 2014

400 200 0 400 Feet